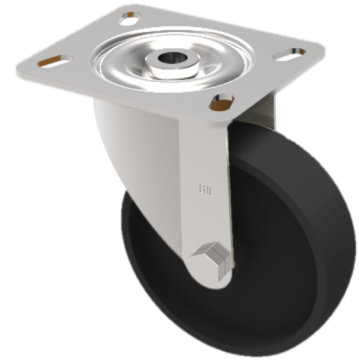


## Thermoplastic Plate Swivel Castor 100mm 220kg Load

**Product code: BZMH100TPBJ3**

Pressed steel swivel castor with a top plate fixing fitted with a 300 C black thermoplastic wheel with ball bearings. Wheel diameter 100mm, tread width 30mm, overall height 131mm, top plate 100mm x 85mm, hole centres 80mm x 60mm or 75mm x 45mm. Load capacity 200kg at 280c maximum temperature.



Diameter (mm)	100
Fixing Option	Plate
Castor Type	Swivel
Plate Size (mm)	100 x 85
Hole Centres (mm)	80/75 x 60/45
To Suit Fixing Bolt (mm)	8
Height (mm)	128
Bearing Type	Ball
Swivel Radius (mm)	92
Wheel Material	Ditherm
Colour / Shore Hardness	Black High Temperature Ditherm Thermoplastic
Temperature Resistance	-40 °C to +280 °C
Load Capacity (kg)	220
Tread (mm)	30
Top Plate Thickness (mm)	2.5
Fork Thickness (mm)	2.5