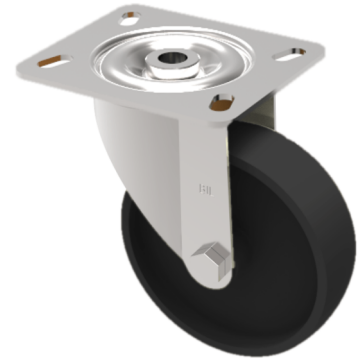


Thermoplastic Plate Swivel Castor 100mm 220kg Load

Product code: SSMH100TP3



Grade 304 Stainless steel swivel castor with a top plate fixing fitted with a black thermoplastic wheel with plain bore. Wheel diameter 100mm, tread width 30mm, overall height 131mm, top plate 100mm x 85mm, hole centres 80mm x 60mm or 75mm x 45mm. Load capacity 220kg at 280c consent and 300c peak temperature. REACH compliant, RoHs Compliant, USDA approved FDA approved.

Diameter (mm)	100
Fixing Option	Plate
Castor Type	Swivel
Plate Size (mm)	100 x 85
Hole Centres (mm)	80/75 x 60/45
To Suit Fixing Bolt (mm)	8
Height (mm)	128
Bearing Type	Plain
Swivel Radius (mm)	92
Wheel Material	Ditherm
Colour / Shore Hardness	Black High Temperature Ditherm Thermoplastic
Temperature Resistance	-40 °C to +280 °C
Load Capacity (kg)	220
Tread (mm)	30
Top Plate Thickness (mm)	2.5
Fork Thickness (mm)	2.5