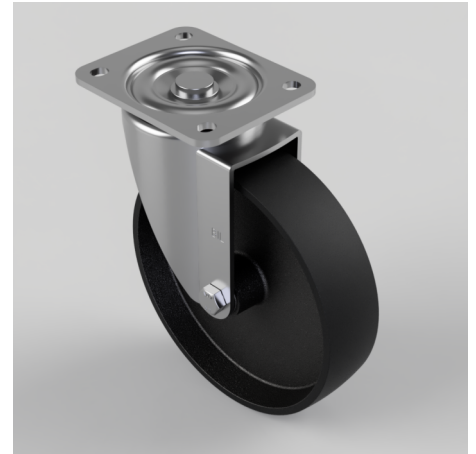


## Thermoplastic Plate Swivel Castor 200mm 700kg Load

**Product code: BZSPH200TP3/HT**

Pressed steel swivel castor with a top plate fixing fitted with black thermoplastic wheel with a plain bore. Wheel diameter 200mm, tread width 50mm, top plate 135mm x 110mm, hole centres 105mm x 80/75mm overall height 238mm Load capacity 700kg. temperature range up to 200oc (Catalogue SKU BZSPH200TP3HT) \*\* MANUFACTURED TO ORDER\*\*



Diameter (mm)	200
Fixing Option	Plate
Castor Type	Swivel
Plate Size (mm)	135 x 110
Hole Centres (mm)	105 x 80/75
To Suit Fixing Bolt (mm)	10
Height (mm)	238
Bearing Type	Plain
Swivel Radius (mm)	153
Wheel Material	Ditherm
Colour / Shore Hardness	Black High Temperature Ditherm Thermoplastic
Temperature Resistance	-40°C to +200°C
Load Capacity (kg)	700
Tread (mm)	50
Top Plate Thickness (mm)	5
Fork Thickness (mm)	5

### BIL GROUP LTD

Porte Marsh Road, Calne, Wiltshire, SN11 9BW

Registered in England No: 2603821

VAT Reg: GB572705729

