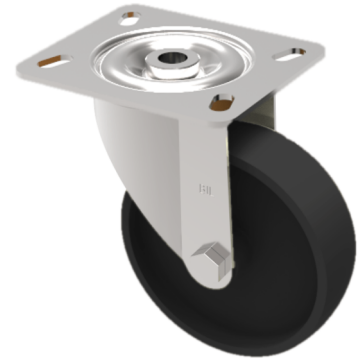


## Thermoplastic Plate Swivel Castor 80mm 220kg Load

**Product code: BZMH80TP3**



Pressed steel swivel castor with a top plate fixing fitted with a black thermoplastic wheel with a Plain Bore. Wheel diameter 80mm, tread width 30mm, overall height 110mm top plate 100mm x 85mm, hole centres 80mm x 60mm or 75mm x 45mm. Load capacity 220kg. Max temp 280 oC .REACH compliant, RoHs Compliant, USDA approved FDA approved.

**\*\*MANUFACTURED TO ORDER\*\***

|                          |  |
|--------------------------|--|
| Diameter (mm)            | 80   |
| Fixing Option            | Plate  |
| Castor Type              | Swivel                                       |
| Plate Size (mm)          | 100 x 85                                     |
| Hole Centres (mm)        | 80/75 x 60/45                                |
| To Suit Fixing Bolt (mm) | 8  |
| Height (mm)              | 110  |
| Bearing Type             | Plain  |
| Swivel Radius (mm)       | 78   |
| Wheel Material           | Ditherm                                      |
| Colour / Shore Hardness  | Black High Temperature Ditherm Thermoplastic |
| Temperature Resistance   | -40 °C to +280 °C                            |
| Load Capacity (kg)       | 220  |
| Tread (mm)               | 30   |
| Top Plate Thickness (mm) | 2.5  |
| Fork Thickness (mm)      | 2.5  |