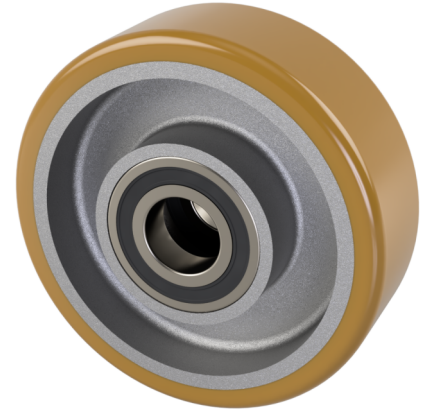


Vulkollan Polyurethane Ball Bearing Wheel 150mm 670Kg Load

Product code: VULW150-50-55-BJM30

Vulkollan polyurethane tyre on a colturiet painted cast iron centred wheel with a ball bearing. Diameter 150mm, Tread Width 50mm, Hub Width 55mm, Hub Diameter 70mm, Bore 30mm, Load Capacity 670kg.



Wheel Material	Polyurethane on Cast Iron
Diameter (mm)	150
Hub Width (mm)	55
Bore Size (mm)	30
Tread (mm)	50
Colour / Shore Hardness	Vulkollan Polyurethane on Cast Iron / 90 Shore A
Temperature Resistance	-20 °C TO +80 °C
Bearing Type	Ball
Hub Diameter (mm)	70
Load Capacity (kg)	670

BIL GROUP LTD

Porte Marsh Road, Calne, Wiltshire, SN11 9BW

Registered in England No: 2603821

VAT Reg: GB572705729

