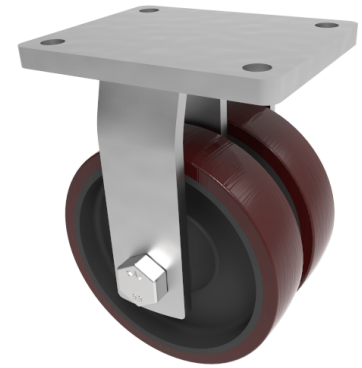


Vulkollan Polyurethane Cast Iron Plate Fixed Castor 200mm 2000kg Load

Product code: 2BZQFXL200VPTBJ/50



POA Fabricated steel, fixed castor fitted with a High grade Vulkollan polyurethane on cast iron centred wheel, with ball journal bearings, 200mm overall wheel diameter, 2 x 50mm tread width, 264mm overall height, 200 x 160mm top plate, 160 x 120mm bolt holes, with a load capacity of 2000kgs

****MANUFACTURED TO ORDER****

Diameter (mm)	200
Fixing Option	Plate
Castor Type	Fixed
Bearing Type	Ball
Plate Size (mm)	200 X 160
Hole Centres (mm)	160 X 120
Height (mm)	264
To Suit Fixing Bolt (mm)	16
Wheel Material	Polyurethane on Cast Iron
Colour / Shore Hardness	Vulkollan Polyurethane on Cast Iron / 92 Shore A
Temperature Resistance	"-30 °C TO +80 °C
Tread (mm)	2 x50
Load Capacity (kg)	2000
Top Plate Thickness (mm)	16
Fork Thickness (mm)	10