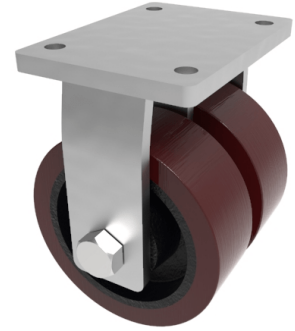


Vulkollan Polyurethane Cast Iron Plate Fixed Castor 200mm 2800kg Load

Product code: 2BZQFX200VPTBJ



POA Twin wheeled swivel castor with a top plate fixing fitted with 2 brown Vulkollan polyurethane wheels on cast iron centres with ball bearings. Wheel diameter 2 x 200mm, tread width 2 x 80mm, overall height 264mm, top plate 220mm x 160mm, NB the hole centres are 120mm in line of travel x 160mm Load capacity 2800kg. ****MANUFACTURED TO ORDER****

Diameter (mm)	200
Fixing Option	Plate
Castor Type	Fixed
Bearing Type	Ball
Plate Size (mm)	200 X 160
Hole Centres (mm)	160 X 120
Height (mm)	264
To Suit Fixing Bolt (mm)	16
Wheel Material	Polyurethane on Cast Iron
Colour / Shore Hardness	Vulkollan Polyurethane on Cast Iron / 92 Shore A
Temperature Resistance	"-30 °C TO +80 °C
Tread (mm)	2 x 80
Load Capacity (kg)	2800
Top Plate Thickness (mm)	16
Fork Thickness (mm)	12