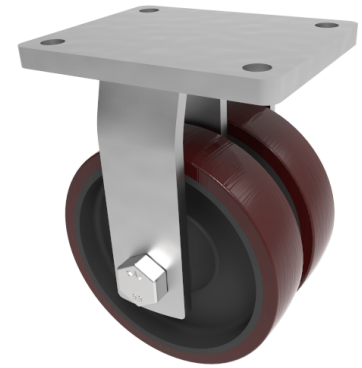


Vulkollan Polyurethane Cast Iron Plate Fixed Castor 300mm 3800kg Load

Product code: 2BZQFX300VPTBJ



POA Twin wheeled fixed castor with a top plate fixing fitted with 2 brown Vulkollan polyurethane wheels on cast iron centres with ball bearings. Wheel diameter 2 x 300mm, tread width 2 x 80mm, overall height 375mm, top plate 220mm x 160mm, hole centres 160 x 120 Load capacity 3800kg.

****MANUFACTURED TO ORDER****

Diameter (mm)	300
Fixing Option	Plate
Castor Type	Fixed
Bearing Type	Ball
Plate Size (mm)	200 X 160
Hole Centres (mm)	160 X 120
Height (mm)	375
To Suit Fixing Bolt (mm)	16
Wheel Material	Polyurethane on Cast Iron
Colour / Shore Hardness	Vulkollan Polyurethane on Cast Iron / 92 Shore A
Temperature Resistance	"-30 °C TO +80 °C
Tread (mm)	2 x 80
Load Capacity (kg)	3800
Top Plate Thickness (mm)	16
Fork Thickness (mm)	12