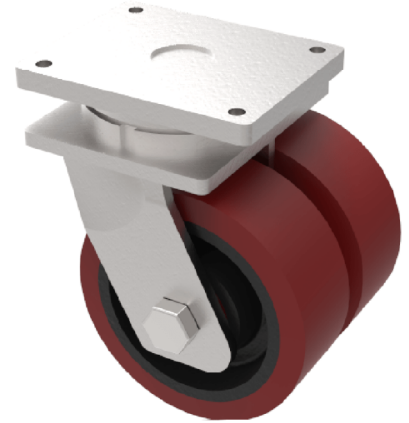


## Vulkollan Polyurethane Cast Iron Plate Swivel Castor 200mm 2000kg Load

**Product code: 2BZQXL200VPTBJ/50**

**POA** Fabricated steel, swivel castor fitted with a High grade Vulkollan polyurethane on cast iron centred wheel, with ball journal bearings, 200mm overall wheel diameter, 2 x 50mm tread width, 264mm overall height, 200 x 160mm top plate, 160 x 120mm bolt holes, with a load capacity of 2000kgs

**\*\*MANUFACTURED TO ORDER\*\***



Diameter (mm)	200
Fixing Option	Plate
Castor Type	Swivel
Bearing Type	Ball
Plate Size (mm)	200 X 160
Hole Centres (mm)	160 X 120
Height (mm)	264
Swivel Radius (mm)	175
To Suit Fixing Bolt (mm)	16
Wheel Material	Polyurethane on Cast Iron
Colour / Shore Hardness	Vulkollan Polyurethane on Cast Iron / 92 Shore A
Temperature Resistance	&quot;-30 °C TO +80 °C
Tread (mm)	2 x 50
Load Capacity (kg)	2000
Top Plate Thickness (mm)	16
Fork Thickness (mm)	10

### BIL GROUP LTD

Porte Marsh Road, Calne, Wiltshire, SN11 9BW

Registered in England No: 2603821

VAT Reg: GB572705729

