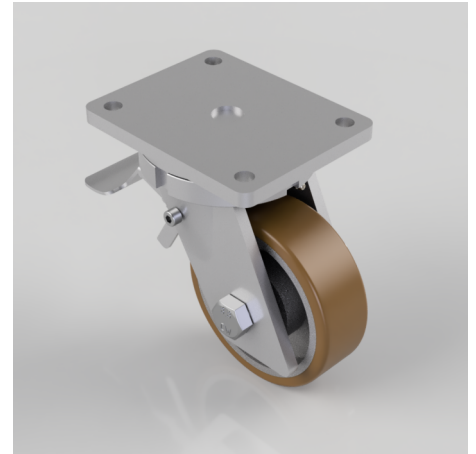


Vulkollan Polyurethane Cast Iron Plate Swivel Castor Brake 150mm 660kg Load

Product code: BZQ150VPTBJSWB

POA Fabricated swivel castors with a top plate fixing fitted with a vulkollan polyurethane tyred cast iron centred wheel with ball bearings and total lock brake. Wheel diameter 150mm, tread width 50mm, overall height 212mm, top plate 175mm x 140mm, hole centres 140mm x 105mm. Load capacity 660kg. ****MANUFACTURED TO ORDER****



Diameter (mm)	150
Fixing Option	Plate
Castor Type	Swivel with Total Lock Brake
Bearing Type	Ball
Height (mm)	212
Plate Size (mm)	175 X 140
Hole Centres (mm)	140 X 105
To Suit Fixing Bolt (mm)	14
Wheel Material	Polyurethane on Cast Iron
Colour / Shore Hardness	Vulkollan Polyurethane on Cast Iron / 92 Shore A
Temperature Resistance	-30 °C TO +80 °C
Top Plate Thickness (mm)	12
Fork Thickness (mm)	10
Swivel Radius (mm)	140
Load Capacity (kg)	660
Tread (mm)	50