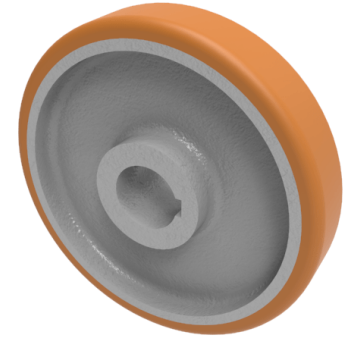


Vulkollan Polyurethane Drive Wheel 150mm 660kg Load

Product code: BZXH150WVPT40KW



POA High grade Vulkollan polyurethane tyre on cast iron centred wheel with a keyway. Diameter 150mm, tread width 50mm, Keyway bore size 40mm, hub length 50mm. Load capacity 830kg static and 660kg at 6kph. PLEASE NOTE BORE SIZE TOLERANCES IS BASED ON H7 (- 0.0 +0.18) DIN6885 ISO 286-2 STANDARD ****MANUFACTURED TO ORDER****

Load Capacity (kg)	660
Wheel Material	Polyurethane on Cast Iron
Diameter (mm)	150
Hub Width (mm)	50
Bore Size (mm)	40
Tread (mm)	50
Colour / Shore Hardness	Vulkollan Polyurethane on Cast Iron / 92 Shore A
Temperature Resistance	-40 °C to +80 °C
Bearing Type	Keywayed