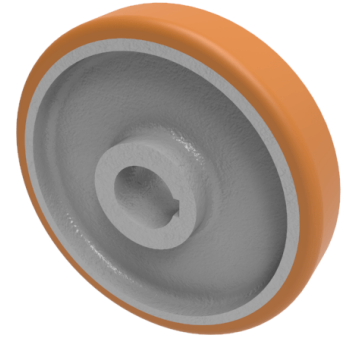


## Vulkollan Polyurethane Drive Wheel 200mm 1080kg Load

**Product code: BZH200WVPT35KW**



**POA** High grade Vulkollan polyurethane tyre on cast iron centred wheel with a keyway. Diameter 200mm, tread width 65mm, Keyway bore size 35mm, hub length 65mm. Load capacity 1350kg static and 1080kg at 6kph. PLEASE NOTE BORE SIZE TOLERANCES IS BASED ON H7 ( - 0.0 +0.18 ) DIN6885 ISO 286-2 STANDARD **\*\*MANUFACTURED TO ORDER\*\***

Load Capacity (kg)	1080
Wheel Material	Polyurethane on Cast Iron
Diameter (mm)	200
Hub Width (mm)	65
Bore Size (mm)	35
Tread (mm)	65
Colour / Shore Hardness	Vulkollan Polyurethane on Cast Iron / 92 Shore A
Temperature Resistance	-40 °C to +80 °C
Bearing Type	Keywayed