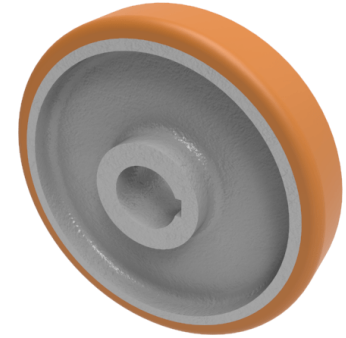


Vulkollan Polyurethane Drive Wheel 200mm 1080kg Load

Product code: BZH200WVPT40KW



POA High grade Vulkollan polyurethane tyre on cast iron centred wheel with a keyway. Diameter 200mm, tread width 65mm, Keyway bore size 40mm, hub length 65mm. Load capacity 1350kg static and 1080kg at 6kph. PLEASE NOTE BORE SIZE TOLERANCES IS BASED ON H7 (- 0.0 +0.18) DIN6885 ISO 286-2 STANDARD ****MANUFACTURED TO ORDER****

Load Capacity (kg)	1080
Wheel Material	Polyurethane on Cast Iron
Diameter (mm)	200
Hub Width (mm)	65
Bore Size (mm)	40
Tread (mm)	65
Colour / Shore Hardness	Vulkollan Polyurethane on Cast Iron / 92 Shore A
Temperature Resistance	-40 °C to +80 °C
Bearing Type	Keywayed