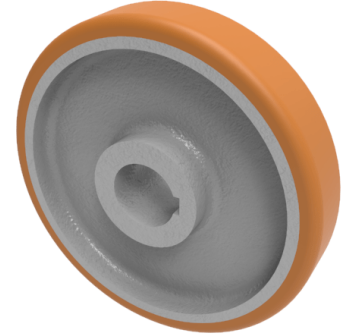


Vulkollan Polyurethane Drive Wheel 250mm 1350kg Load

Product code: BZPMH250WVPT50KW



POA High grade Vulkollan polyurethane tyre on cast iron centred wheel with a keyway. Diameter 250mm, tread width 50mm, Keyway bore size 50mm, hub length 60mm. Load capacity 1700kg static and 1350kg at 6kph. PLEASE NOTE BORE SIZE TOLERANCES IS BASED ON H7 (- 0.0 +0.18) DIN6885 ISO 286-2 STANDARD ****MANUFACTURED TO ORDER****

Load Capacity (kg)	1350
Wheel Material	Polyurethane on Cast Iron
Diameter (mm)	250
Hub Width (mm)	60
Bore Size (mm)	50
Tread (mm)	50
Colour / Shore Hardness	Vulkollan Polyurethane on Cast Iron / 92 Shore A
Temperature Resistance	-40 °C to +80 °C
Bearing Type	Keywayed

BIL GROUP LTD

Porte Marsh Road, Calne, Wiltshire, SN11 9BW

Registered in England No: 2603821

VAT Reg: GB572705729

