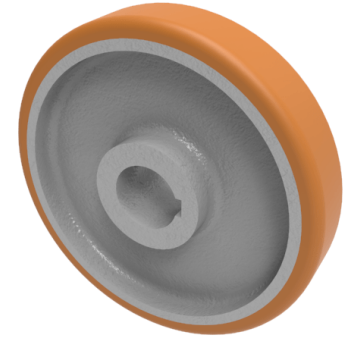


## Vulkollan Polyurethane Drive Wheel 250mm 1700kg Load

**Product code: BZH250WVPT50KW**



**POA** High grade Vulkollan polyurethane tyre on cast iron centred wheel with a keyway. Diameter 250mm, tread width 80mm, Keyway bore size 50mm, hub length 80mm. Load capacity 2130kg static and 1700kg at 6kph. PLEASE NOTE BORE SIZE TOLERANCES IS BASED ON H7 ( - 0.0 +0.18 ) DIN6885 ISO 286-2 STANDARD **\*\*MANUFACTURED TO ORDER\*\***

Load Capacity (kg)	1700
Wheel Material	Polyurethane on Cast Iron
Diameter (mm)	250
Hub Width (mm)	80
Bore Size (mm)	50
Tread (mm)	80
Colour / Shore Hardness	Vulkollan Polyurethane on Cast Iron / 92 Shore A
Temperature Resistance	-40 °C to +80 °C
Bearing Type	Keywayed