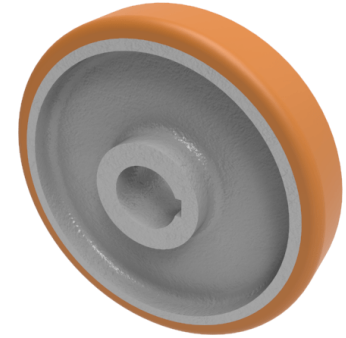


Vulkollan Polyurethane Drive Wheel 250mm 1800kg Load

Product code: VPT2508050KM



POA High grade Vulkollan polyurethane tyre on cast iron centred wheel with a keyway. Diameter 250mm, tread width 80mm, Keyway bore size 50mm, hub length 80mm. Load capacity 1800kg PLEASE NOTE BORE SIZE TOLERANCES IS BASED ON H7 (- 0.0 +0.18) DIN6885 ISO 286-2 STANDARD ****MANUFACTURED TO ORDER****

Load Capacity (kg)	1800
Wheel Material	Polyurethane on Cast Iron
Diameter (mm)	250
Hub Width (mm)	80
Bore Size (mm)	50
Tread (mm)	80
Colour / Shore Hardness	Vulkollan Polyurethane on Cast Iron / 92 Shore A
Temperature Resistance	-40 °C to +80 °C
Bearing Type	Keywayed