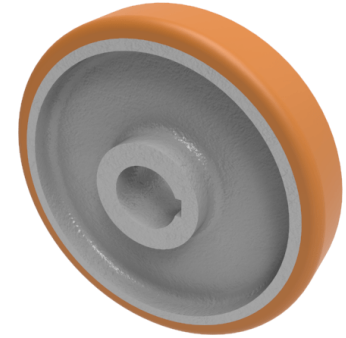


## Vulkollan Polyurethane Drive Wheel 300mm 1200kg Load

**Product code: VPT3005060KM**



**POA** High grade Vulkollan polyurethane tyre on cast iron centred wheel with a keyway. Diameter 300mm, tread width 50mm, Keyway bore size 60mm, hub length 60mm. Load capacity 1200kg PLEASE NOTE BORE SIZE TOLERANCES IS BASED ON H7 ( - 0.0 +0.18 ) DIN6885 ISO 286-2 STANDARD **\*\*MANUFACTURED TO ORDER\*\***

Load Capacity (kg)	1200
Wheel Material	Polyurethane on Cast Iron
Diameter (mm)	300
Hub Width (mm)	60
Bore Size (mm)	60
Tread (mm)	50
Colour / Shore Hardness	Vulkollan Polyurethane on Cast Iron / 92 Shore A
Temperature Resistance	-40 °C to +80 °C
Bearing Type	Keywayed

### BIL GROUP LTD

Porte Marsh Road, Calne, Wiltshire, SN11 9BW

Registered in England No: 2603821

VAT Reg: GB572705729

