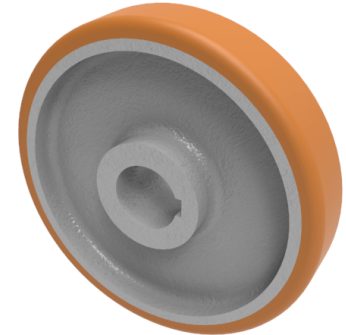


Vulkollan Polyurethane Drive Wheel 300mm 1900kg Load

Product code: BZH300WVPT75KW



POA High grade Vulkollan polyurethane tyre on cast iron centred wheel with a keyway. Diameter 300mm, tread width 80mm, Keyway bore size 75mm, hub length 80mm. Load capacity 2400kg static and 1900kg at 6kph. PLEASE NOTE BORE SIZE TOLERANCES IS BASED ON H7 (- 0.0 +0.18) DIN6885 ISO 286-2 STANDARD ****MANUFACTURED TO ORDER****

| | |
|-------------------------|--|
| Load Capacity (kg) | 1900 |
| Wheel Material | Polyurethane on Cast Iron |
| Diameter (mm) | 300 |
| Hub Width (mm) | 80 |
| Bore Size (mm) | 75 |
| Tread (mm) | 80 |
| Colour / Shore Hardness | Vulkollan Polyurethane on Cast Iron / 92 Shore A |
| Temperature Resistance | -40 °C to +80 °C |
| Bearing Type | Keywayed |