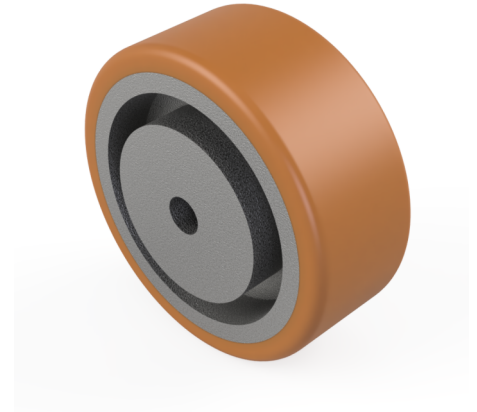


Vulkollan Polyurethane Pilot Bore Wheel 100mm 360kg Load

Product code: VULW100-40-45-PBM35

Vulkollan polyurethane tyre on a colturiet painted cast iron centred wheel with a pilot bore. Diameter 100mm, tread width 40mm, Hub Width 45mm, Hub Diameter 56mm, Bore 35mm, Load Capacity 360kg. PLEASE NOTE BORE SIZE TOLERANCES ARE BASED ON H7 (0 +0.025) DIN6885 ISO 286-2 STANDARD



Wheel Material	Polyurethane on Cast Iron
Diameter (mm)	100
Hub Width (mm)	45
Bore Size (mm)	35
Tread (mm)	40
Colour / Shore Hardness	Vulkollan Polyurethane on Cast Iron / 90 Shore A
Temperature Resistance	-20 °C TO +80 °C
Bearing Type	Plain
Hub Diameter (mm)	56
Load Capacity (kg)	360