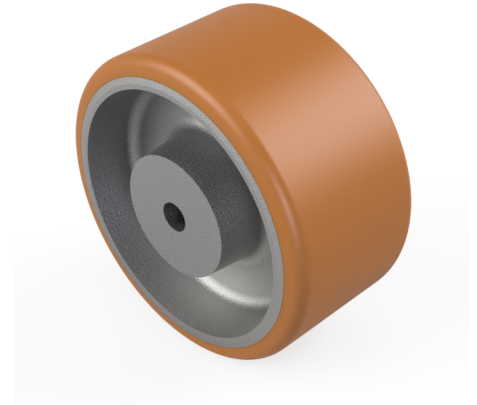


Vulkollan Polyurethane Pilot Bore Wheel 125mm 380kg Load

Product code: VULW125-35-44-PBM25

Vulkollan polyurethane tyre on a colturiet painted cast iron centred wheel with a pilot bore. Diameter 125mm, Tread Width 35mm, Hub Width 44mm, Hub Diameter 43mm, Bore 12mm, Load Capacity 380kg. PLEASE NOTE BORE SIZE TOLERANCES ARE BASED ON H7 (0 +0.021) DIN6885 ISO 286-2 STANDARD



Wheel Material	Polyurethane on Cast Iron
Diameter (mm)	125
Hub Width (mm)	44
Bore Size (mm)	25
Tread (mm)	35
Colour / Shore Hardness	Vulkollan Polyurethane on Cast Iron / 90 Shore A
Temperature Resistance	-20 °C TO +80 °C
Bearing Type	Plain
Hub Diameter (mm)	43
Load Capacity (kg)	380