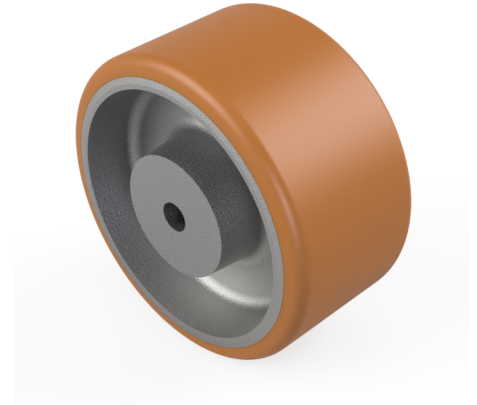


Vulkollan Polyurethane Pilot Bore Wheel 125mm 550kg Load

Product code: VULW125-50-50-KM40

Vulkollan polyurethane tyre on a colturiet painted cast iron centred wheel with a pilot bore. Diameter 125mm, Tread Width 50mm, Hub Width 50mm, Hub Diameter 57mm, Bore 20mm, Load Capacity 550kg. PLEASE NOTE BORE SIZE TOLERANCES ARE BASED ON H7 (0 +0.025) DIN6885 ISO 286-2 STANDARD



Wheel Material	Polyurethane on Cast Iron
Diameter (mm)	125
Hub Width (mm)	50
Bore Size (mm)	40
Tread (mm)	50
Colour / Shore Hardness	Vulkollan Polyurethane on Cast Iron / 90 Shore A
Temperature Resistance	-20 °C TO +80 °C
Bearing Type	Plain
Hub Diameter (mm)	57
Load Capacity (kg)	550