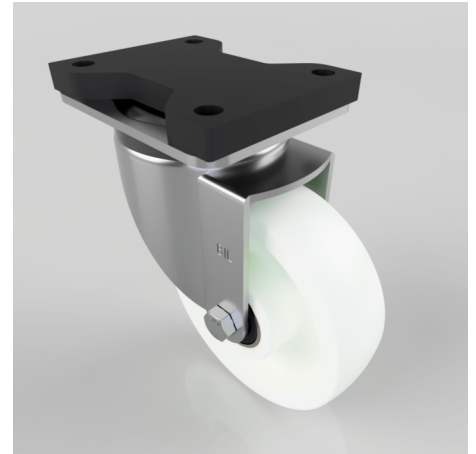


White Nylon Swivel Plate Castor 150mm 700kg

Product code: BZSPH150NYBJFP

Pressed steel swivel castor with a top plate fixing fitted with a white nylon wheel with ball bearings. Wheel diameter 150mm, tread width 45mm, overall height 204mm, top plate 135mm x 110mm, hole centres 105mm x 80mm Load capacity 700kg.



| | |
|--------------------------|------------------|
| Fixing Option | Plate |
| Diameter (mm) | 150 |
| Load Capacity (kg) | 700 |
| Castor Type | Swivel |
| Height (mm) | 204 |
| Wheel Material | Nylon |
| Colour / Shore Hardness | White Nylon |
| Bearing Type | Ball |
| Tread (mm) | 45 |
| Fork Thickness (mm) | 5 |
| Temperature Resistance | -30 °C TO +80 °C |
| Plate Size (mm) | 135 x 110 |
| Hole Centres (mm) | 105 x 80 |
| Swivel Radius (mm) | 128 |
| Top Plate Thickness (mm) | 19 |
| To Suit Fixing Bolt (mm) | 10 |