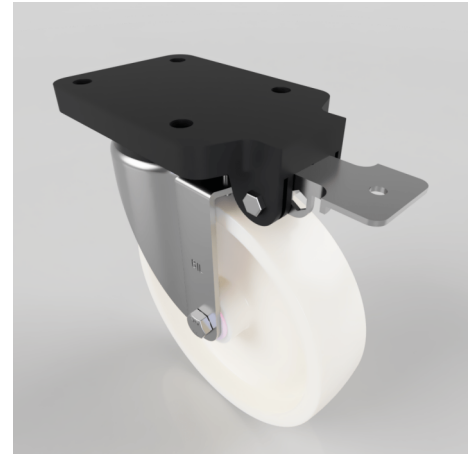


White Nylon Swivel Brake Plate Castor 200mm 700kg

Product code: BZSPH200NYBFPSWB

Pressed steel swivel castor with a top plate fixing fitted with a white nylon wheel with roller bearings and fixed position locked brake. Wheel diameter 200mm, tread width 50mm, overall height 252mm, top plate 180mm x 115mm, hole centres 105mm x 80mm Load capacity 700kg.



Fixing Option	Plate
Diameter (mm)	200
Load Capacity (kg)	700
Castor Type	Swivel with Fixed Position Total Lock Brake
Height (mm)	252
Wheel Material	Nylon
Colour / Shore Hardness	White Nylon
Bearing Type	Roller
Tread (mm)	50
Fork Thickness (mm)	5
Temperature Resistance	-30 °C TO +80 °C
Plate Size (mm)	180 x 115
Hole Centres (mm)	105 x 80
Swivel Radius (mm)	164
Top Plate Thickness (mm)	19
To Suit Fixing Bolt (mm)	10

BIL GROUP LTD

Porte Marsh Road, Calne, Wiltshire, SN11 9BW

Registered in England No: 2603821

VAT Reg: GB572705729

