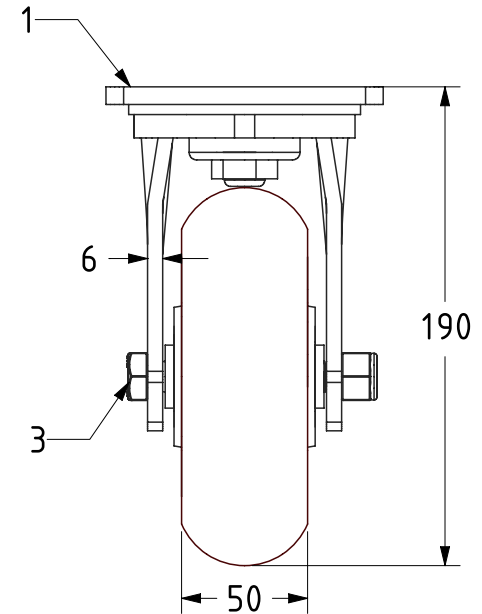


| ITEM NO. | PART NUMBER       | QTY |
|----------|-------------------|-----|
| 1        | BZMJ150AS         | 1   |
| 2        | BZH150WRPTABJM20  | 1   |
| 3        | AXLE KIT          |     |
|          | TH20X4X12         | 2   |
|          | HEXBOLTM12X90Z8.8 | 1   |
|          | NYLOCM12Z14MM     | 1   |



|  |   |             |         |          |               |   |              |   |
|--|---|-------------|---------|----------|---------------|---|--------------|---|
| <p>UNLESS OTHERWISE SPECIFIED DIMENSIONS ARE IN MILLIMETRES</p> <p>Unspecified Tolerances<br/>Machining ± 0.25mm<br/>Fabrication ± 1mm</p> | <p>DRAWING DISCLAIMER</p> <p>COPYRIGHT OF THIS DRAWING IS RESERVED BY BIL GROUP LTD. IT IS ISSUED ON CONDITION THAT IT IS NOT REPRODUCED, COPIED, OR DISCLOSED TO A THIRD PARTY EITHER WHOLLY OR IN PART WITHOUT THE CONSENT IN WRITING OF BIL GROUP LTD.</p> |             | NAME    | DATE     |               | <p>BIL Group Ltd,<br/>Porte Marsh Road,<br/>Calne, Wiltshire, SN11 9BW,<br/>United Kingdom<br/>Tel +44 (0)1249 822 222<br/>www.bilgroup.co.uk</p> |              |   |
|  |   | DRAWN       | Matt    | 07/06/23 |               |   |              |   |
|  |   | APPROVED BY | Kevin   | 07/06/23 | DWG NO.       | BZMJ150RPTABJ   | REV          | 1 |
|  |   | SCALE       | 1:3     |          | BZMJ150RPTABJ |   | SHEET 1 OF 1 |   |
|  |   | WEIGHT      | 3.528kg |          |               |   |              |   |