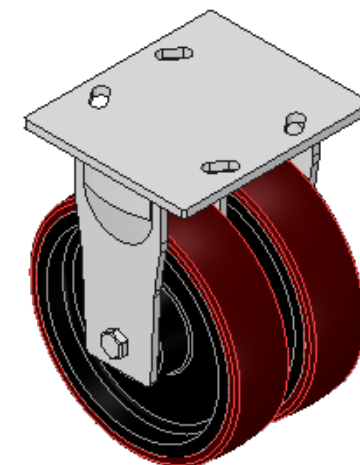
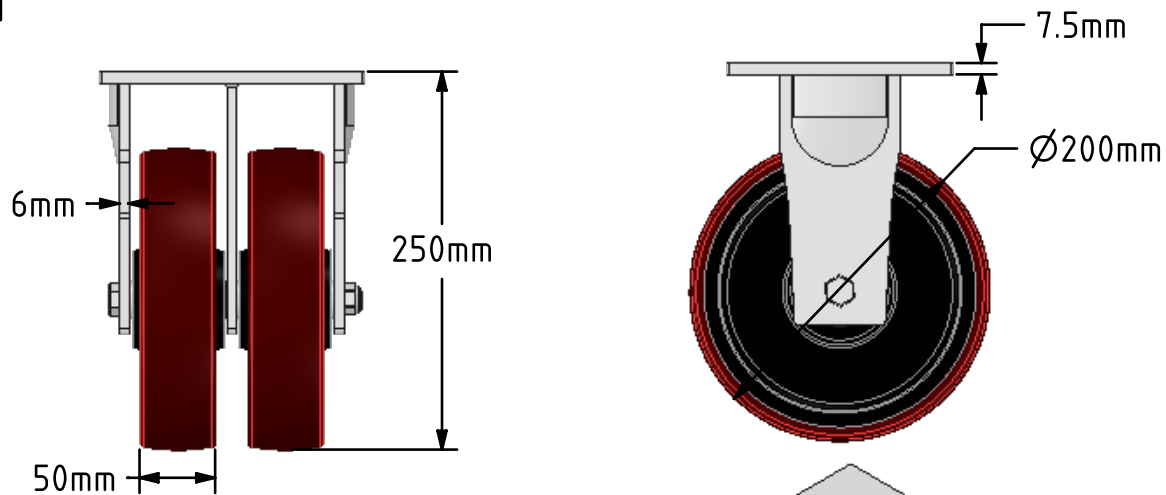
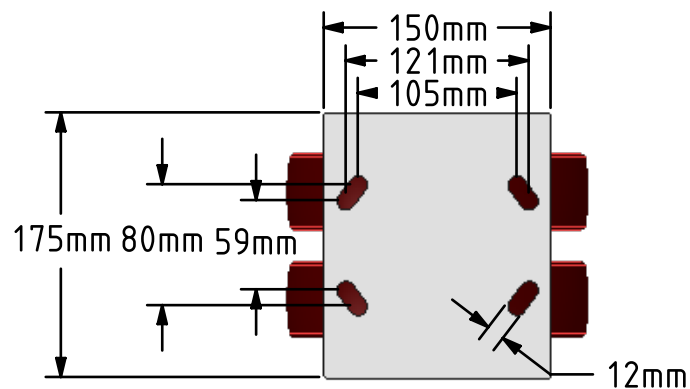
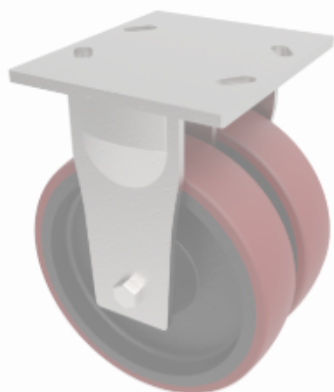



DRAWING DISCLAIMER
 COPYRIGHT OF THIS DRAWING IS RESERVED BY BIL GROUP LTD. IT IS ISSUED ON CONDITION THAT IT IS NOT REPRODUCED, COPIED, OR DISCLOSED TO A THIRD PARTY EITHER WHOLLY OR IN PART WITHOUT THE CONSENT IN WRITING OF BIL GROUP LTD.



Description:
 2BZKF200PTBJ

Twin wheeled fabricated fixed castor with a top plate fixing fitted with 2 polyurethane tyred cast iron centred wheels with ball journal bearings. Wheel diameter 2 x 200mm, tread width 2 x 50mm, overall height 250mm, top plate 175mm x 150mm hole centres 105mm x 80mm or 121mm x 59mm. Load capacity 1500kg.



	NAME	DATE	BIL Group Ltd, Porte Marsh Road, Calne Wiltshire, SN11 9BW, United Kingdom Tel +44 (0)1249 822 222 Fax: +44 (0)1249 822 300 www.bilgroup.co.uk	
DRAWN	Matt	18/08/17		
APPROVED BY	Kevin	18/08/17		
SCALE	1:5	18/08/17		
WEIGHT	10.346kg	18/08/17		
UNLESS OTHERWISE SPECIFIED DIMENSIONS ARE IN MILLIMETRES			SIZE	DWG NO.
Unspecified Tolerances Machining ± 0.25mm Fabrication ± 1mm			A4	BILCW032BZKF200PTBJ_01
			FILE NAME	BILCW032BZKF200PTBJ_01.PDF
			TITLE	2BZKF200PTBJ
			REV	1
			SHEET	1 OF 1