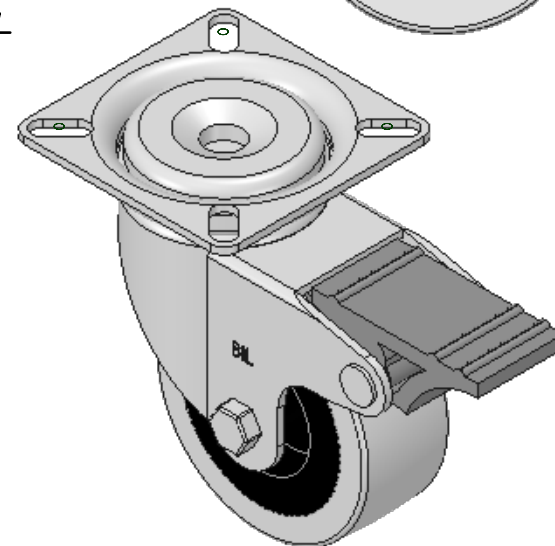
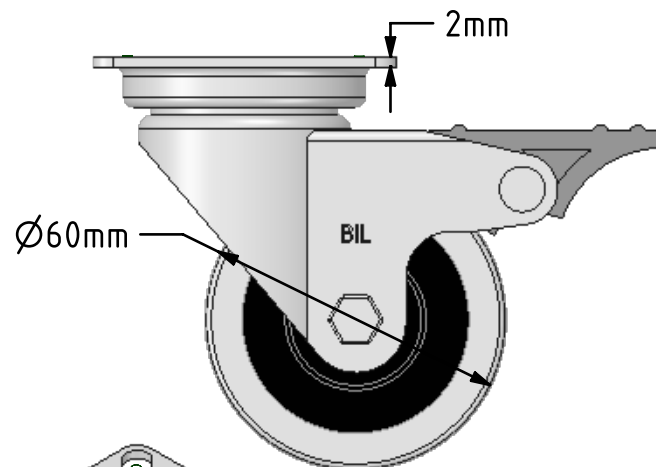
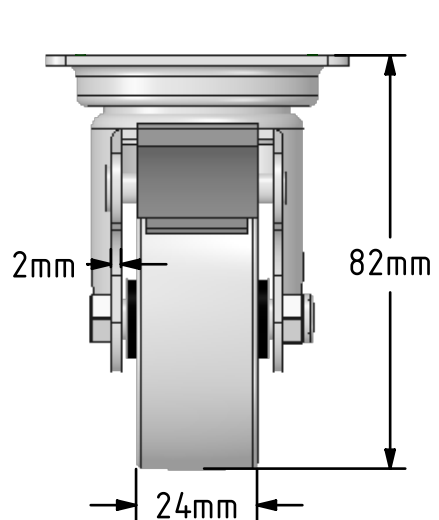
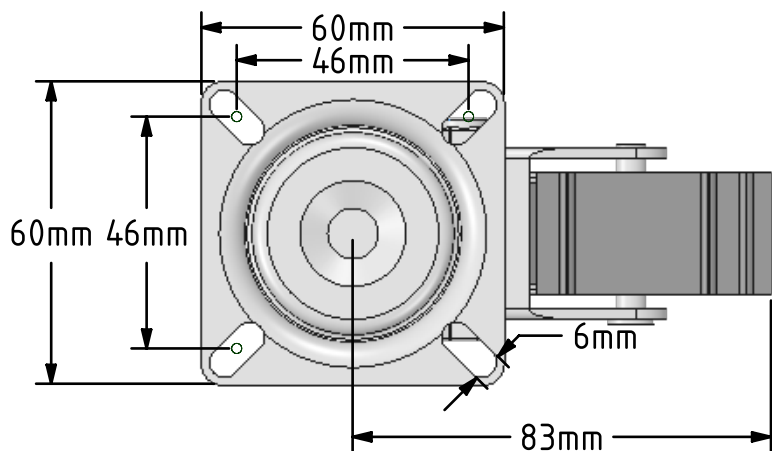


DRAWING DISCLAIMER
 COPYRIGHT OF THIS DRAWING IS RESERVED BY BIL GROUP LTD. IT IS ISSUED ON CONDITION THAT IT IS NOT REPRODUCED, COPIED, OR DISCLOSED TO A THIRD PARTY EITHER WHOLLY OR IN PART WITHOUT THE CONSENT IN WRITING OF BIL GROUP LTD.



Description:
 BZA60GRSWB

Pressed steel swivel castor with top plate fixing fitted with a grey rubber tyre on grey polypropylene centre wheel with plain bearing and a total lock brake. Wheel diameter 60mm, tread width 24mm, overall height 82mm, plate size 60mm x 60mm, hole centres 46mm x 46. Load capacity 50kg.



	NAME	DATE
DRAWN	Matt	18/07/18
APPROVED BY	Tim W	18/07/18
SCALE	2:3	18/07/18
WEIGHT	0.295kg	18/07/18

UNLESS OTHERWISE SPECIFIED DIMENSIONS ARE IN MILLIMETRES

Unspecified Tolerances
 Machining ± 0.25mm
 Fabrication ± 1mm



BIL Group Ltd, Porte Marsh Road, Calne
 Wiltshire, SN11 9BW, United Kingdom
 Tel +44 (0)1249 822 222 Fax: +44 (0)1249 822 300
 www.bilgroup.co.uk

TITLE

BZA60GRSWB

SIZE DWG NO.

A4

BILCW03BZA60GRSWB_01

REV

1

FILE NAME BILCW03BZA60GRSWB_01.PDF

SHEET 1 OF 1