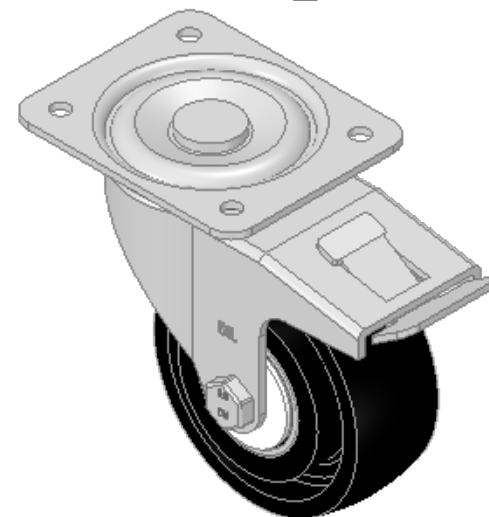
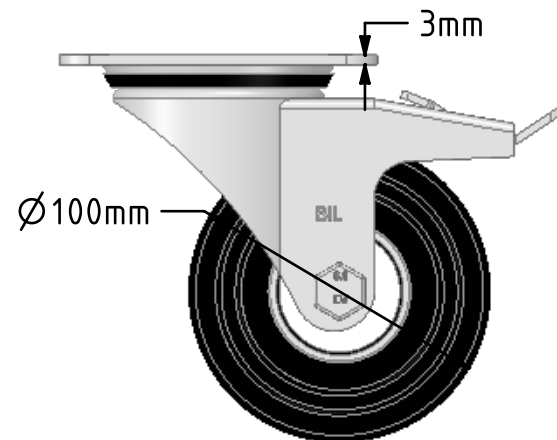
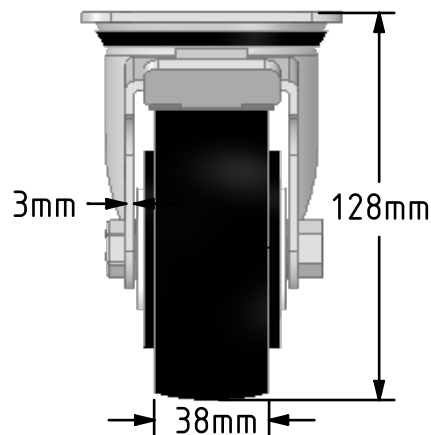
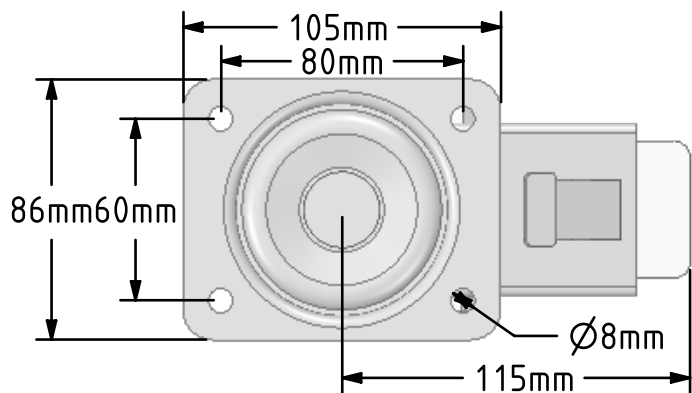


DRAWING DISCLAIMER
 COPYRIGHT OF THIS DRAWING IS RESERVED BY BIL GROUP LTD. IT IS ISSUED ON CONDITION THAT IT IS NOT REPRODUCED, COPIED, OR DISCLOSED TO A THIRD PARTY EITHER WHOLLY OR IN PART WITHOUT THE CONSENT IN WRITING OF BIL GROUP LTD.



Description:
 BZEH100CIBJSWB

Pressed steel swivel castor with a top plate fixing fitted with a black cast iron wheel with ball bearings and total lock brake. Wheel diameter 100mm, tread width 38mm, overall height 128mm, top plate 105mm x 86mm, hole centres 80mm x 60mm. Load capacity 300kg. (not high temp)



	NAME	DATE
DRAWN	Matt	25/01/18
APPROVED BY	Tim W	25/01/18
SCALE	2:5	25/01/18
WEIGHT	2.445kg	25/01/18

UNLESS OTHERWISE SPECIFIED DIMENSIONS ARE IN MILLIMETRES

Unspecified Tolerances
 Machining ± 0.25mm
 Fabrication ± 1mm



BIL Group Ltd, Porte Marsh Road, Calne
 Wiltshire, SN11 9BW, United Kingdom
 Tel +44 (0)1249 822 222 Fax: +44 (0)1249 822 300
 www.bilgroup.co.uk

TITLE

BZEH100CIBJSWB

SIZE DWG NO.

A4

BILCW03BZEH100CIBJSWB_01

REV

1

FILE NAME BILCW03BZEH100CIBJSWB_01.PDF

SHEET 1 OF 1