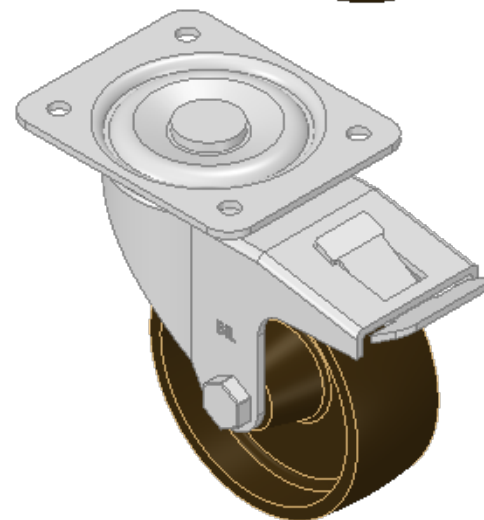
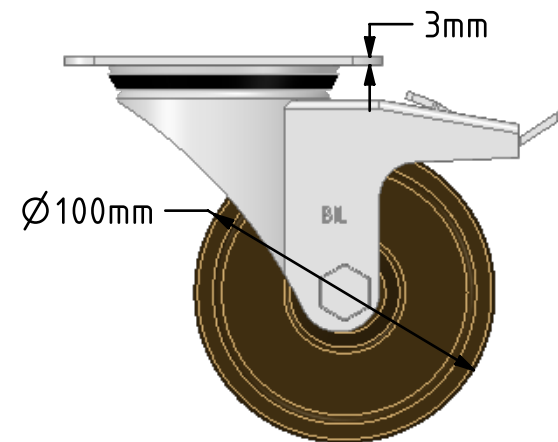
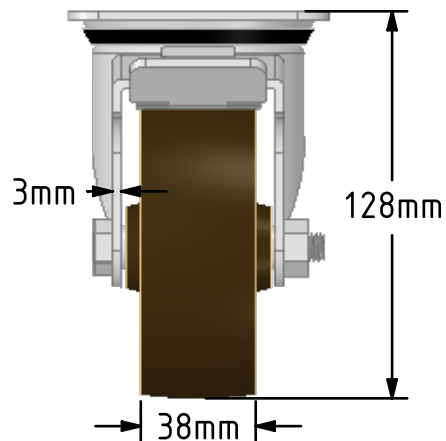
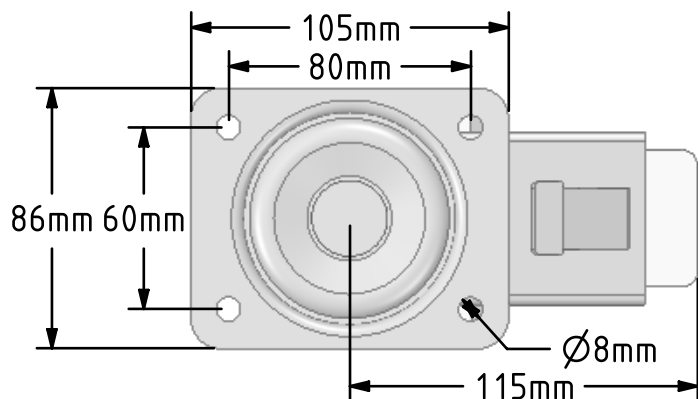


DRAWING DISCLAIMER
 COPYRIGHT OF THIS DRAWING IS RESERVED BY BIL GROUP LTD. IT IS ISSUED ON CONDITION THAT IT IS NOT REPRODUCED, COPIED, OR DISCLOSED TO A THIRD PARTY EITHER WHOLLY OR IN PART WITHOUT THE CONSENT IN WRITING OF BIL GROUP LTD.



Description:
 BZEH100CISWB

Pressed steel swivel castor with a top plate fixing fitted with a cast iron wheel with a plain bearing and total lock brake. Wheel diameter 100mm, tread width 38mm, overall height 128mm, top plate 105mm x 86mm, hole centres 80mm x 60mm. Load capacity 260kg.



	NAME	DATE
DRAWN	Matt	28/09/18
APPROVED BY	Chris	28/09/18
SCALE	2:5	28/09/18
WEIGHT	1.749kg	28/09/18

UNLESS OTHERWISE SPECIFIED DIMENSIONS ARE IN MILLIMETRES

Unspecified Tolerances
 Machining ± 0.25mm
 Fabrication ± 1mm



BIL Group Ltd, Porte Marsh Road, Calne
 Wiltshire, SN11 9BW, United Kingdom
 Tel +44 (0)1249 822 222 Fax: +44 (0)1249 822 300
 www.bilgroup.co.uk

TITLE

BZEH100CISWB

SIZE DWG NO.
 A4 BILCW03BZEH100CISWB_01

REV
 1

FILE NAME BILCW03BZEH100CISWB_01.PDF SHEET 1 OF 1