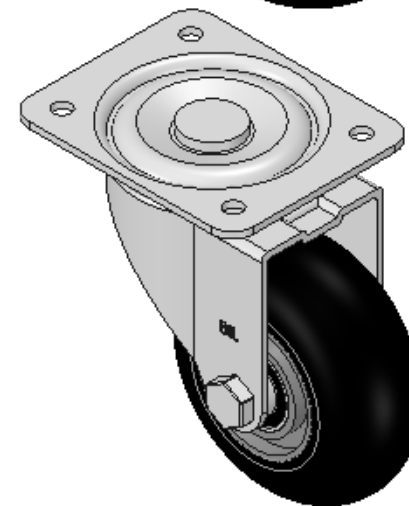
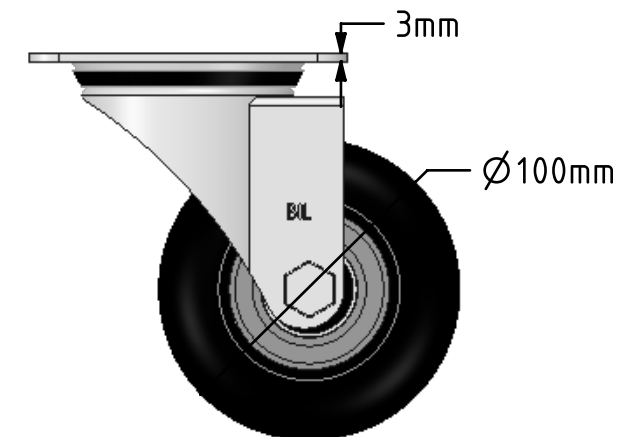
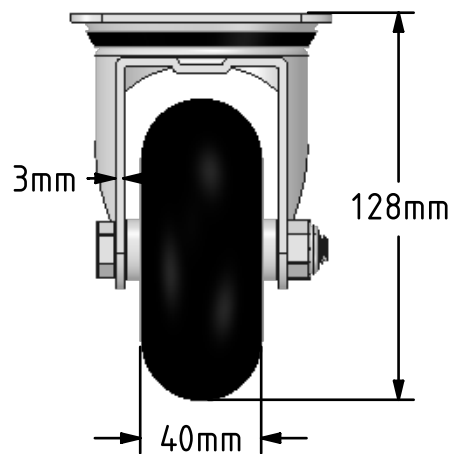
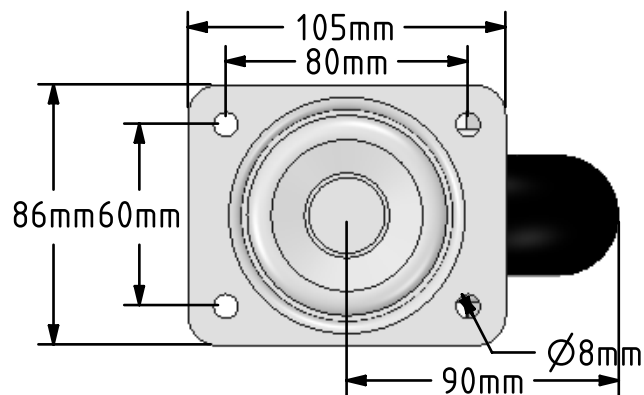


**DRAWING DISCLAIMER**


COPYRIGHT OF THIS DRAWING IS RESERVED BY BIL GROUP LTD. IT IS ISSUED ON CONDITION THAT IT IS NOT REPRODUCED, COPIED, OR DISCLOSED TO A THIRD PARTY EITHER WHOLLY OR IN PART WITHOUT THE CONSENT IN WRITING OF BIL GROUP LTD.



**Description:**  
BZEH100SRERBJ

Pressed steel swivel castor with a top plate fixing with a black ergonomic high elastic natural 55 shore A round profile rubber tyred wheel with a aluminium centre with ball bearings. Wheel diameter 100mm, tread width 40mm, overall height 128mm, top plate 105mm x 86mm, hole centres 80mm x 60mm. Load capacity 150kg. REACH compliant also PAH-Free rubber to confirm to EU-directive 2005/69/EC, also available with flat tread details on request



	NAME	DATE	BIL Group Ltd, Porte Marsh Road, Calne Wiltshire, SN11 9BW, United Kingdom Tel +44 (0)1249 822 222 Fax: +44 (0)1249 822 300 www.bilgroup.co.uk	
DRAWN	Matt	25/01/18		
APPROVED BY	Tim W	25/01/18		
SCALE	2:5	25/01/18		
WEIGHT	1.124kg	25/01/18		
UNLESS OTHERWISE SPECIFIED DIMENSIONS ARE IN MILLIMETRES			TITLE	
Unspecified Tolerances Machining ± 0.25mm Fabrication ± 1mm			BZEH100SRERBJ	
SIZE		DWG NO.	REV	
A4		BILCW03BZEH100SRERBJ_01	1	
FILE NAME			SHEET 1 OF 1	
BILCW03BZEH100SRERBJ_01.PDF				