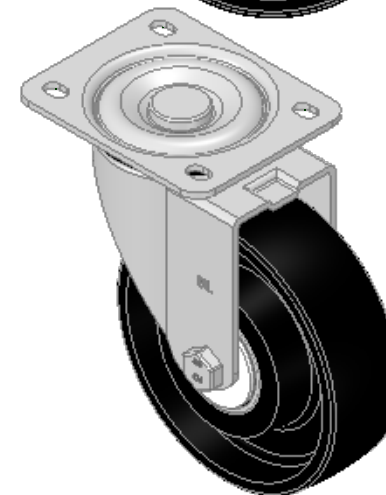
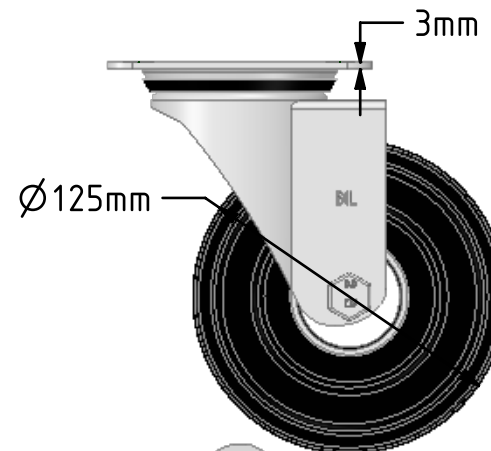
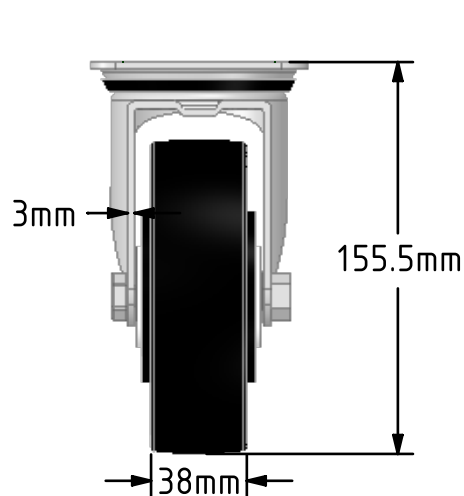
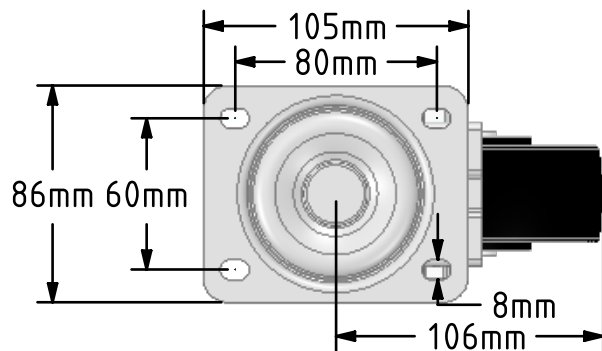


DRAWING DISCLAIMER  
 COPYRIGHT OF THIS DRAWING IS RESERVED BY BIL GROUP LTD. IT IS ISSUED ON CONDITION THAT IT IS NOT REPRODUCED, COPIED, OR DISCLOSED TO A THIRD PARTY EITHER WHOLLY OR IN PART WITHOUT THE CONSENT IN WRITING OF BIL GROUP LTD.



**Description:**  
**BZEH125CIBJ**

Pressed steel swivel castor with a top plate fixing with a cast iron wheel with ball bearings. Wheel diameter 125mm, tread width 38mm, overall height 155mm, top plate 105mm x 86mm, hole centres 80mm x 60mm. Load capacity 300kg. Max Temp 80c



	NAME	DATE
DRAWN	Matt	28/09/18
APPROVED BY	Chris	28/09/18
SCALE	1:3	28/09/18
WEIGHT	2.741kg	28/09/18

**BIL** BIL Group Ltd, Porte Marsh Road, Calne  
 Wiltshire, SN11 9BW, United Kingdom  
 Tel +44 (0)1249 822 222 Fax: +44 (0)1249 822 300  
 www.bilgroup.co.uk

TITLE	BZEH125CIBJ	
-------	-------------	--

UNLESS OTHERWISE SPECIFIED DIMENSIONS ARE IN MILLIMETRES  Unspecified Tolerances Machining ± 0.25mm Fabrication ± 1mm	SIZE	DWG NO.	REV
	A4	BILCW03BZEH125CIBJ_01	1
FILE NAME		BILCW03BZEH125CIBJ_01.PDF	SHEET 1 OF 1