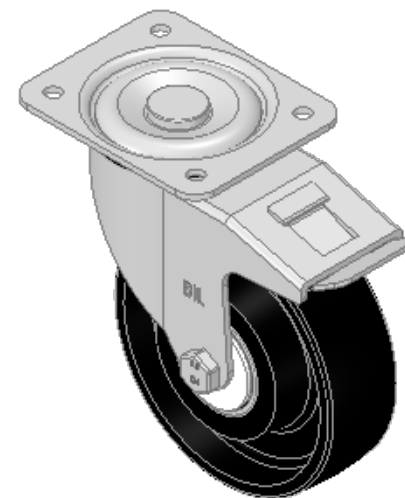
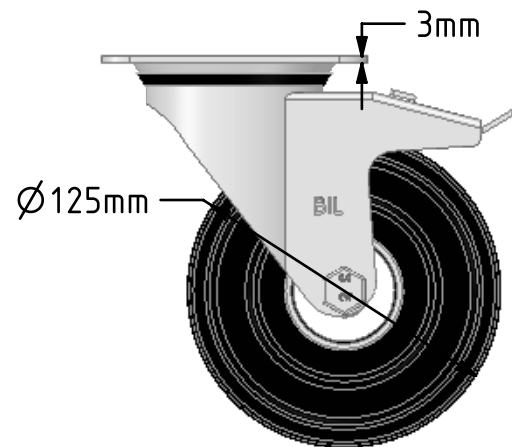
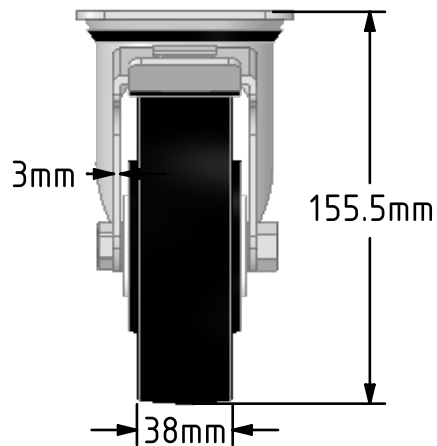
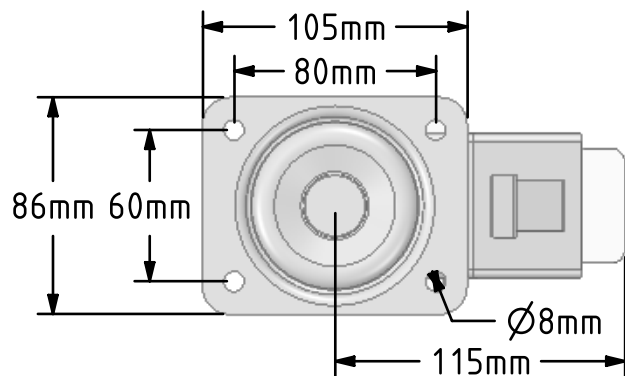


DRAWING DISCLAIMER
 COPYRIGHT OF THIS DRAWING IS RESERVED BY BIL GROUP LTD. IT IS ISSUED ON CONDITION THAT IT IS NOT REPRODUCED, COPIED, OR DISCLOSED TO A THIRD PARTY EITHER WHOLLY OR IN PART WITHOUT THE CONSENT IN WRITING OF BIL GROUP LTD.



Description:
 BZEH125CIBJSWB

Pressed steel swivel castor with a top plate fixing with a cast iron wheel with ball bearings and a total lock brake. Wheel diameter 125mm, tread width 38mm, overall height 155mm, top plate 105mm x 86mm, hole centres 80mm x 60mm. Load capacity 300kg.not high temp



	NAME	DATE
DRAWN	Matt	01/10/18
APPROVED BY	Chris	01/10/18
SCALE	1:3	01/10/18
WEIGHT	2.905kg	01/10/18

UNLESS OTHERWISE SPECIFIED DIMENSIONS ARE IN MILLIMETRES

Unspecified Tolerances
 Machining ± 0.25mm
 Fabrication ± 1mm



BIL Group Ltd, Porte Marsh Road, Calne
 Wiltshire, SN11 9BW, United Kingdom
 Tel +44 (0)1249 822 222 Fax: +44 (0)1249 822 300
 www.bilgroup.co.uk

TITLE

BZEH125CIBJSWB

SIZE	DWG NO.	REV
A4	BILCW03BZEH125CIBJSWB_01	1

FILE NAME BILCW03BZEH125CIBJSWB_01.PDF SHEET 1 OF 1