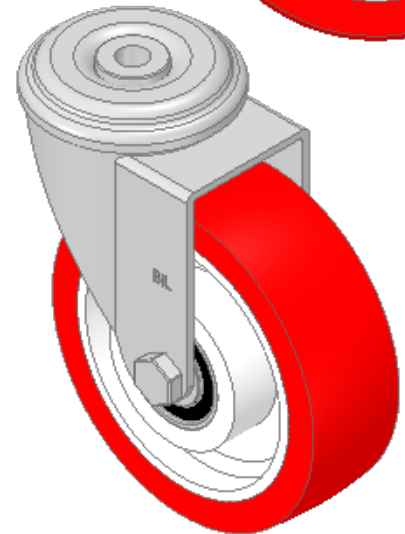
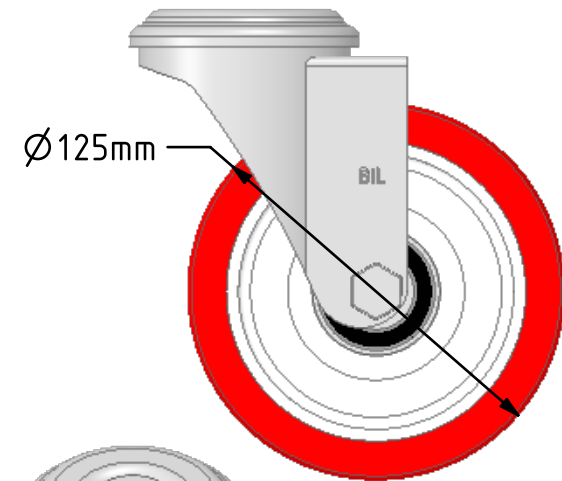
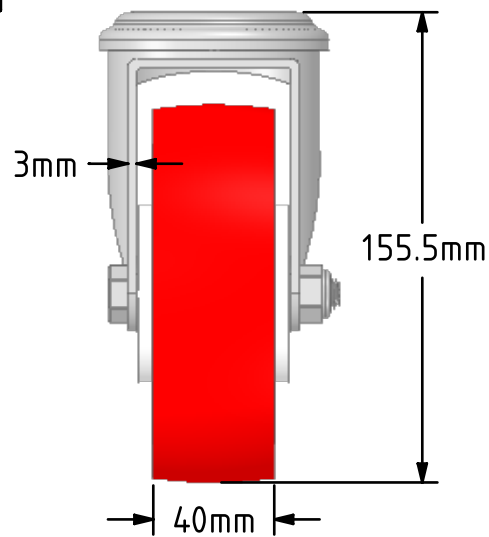
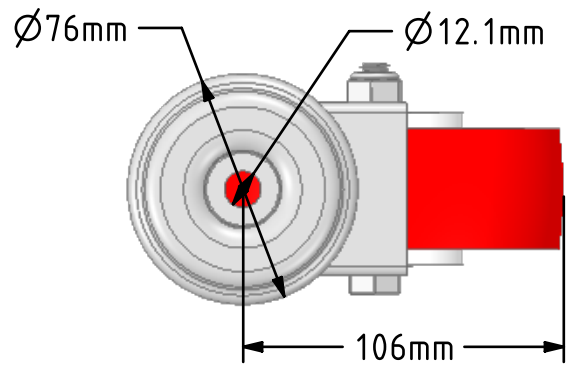


DRAWING DISCLAIMER  
 COPYRIGHT OF THIS DRAWING IS RESERVED BY BIL GROUP LTD. IT IS ISSUED ON CONDITION THAT IT IS NOT REPRODUCED, COPIED, OR DISCLOSED TO A THIRD PARTY EITHER WHOLLY OR IN PART WITHOUT THE CONSENT IN WRITING OF BIL GROUP LTD.



Description:  
**BZEH125NPBJBH12**  
 Pressed steel swivel castor with a 12mm bolt hole fixing fitted with a red polyurethane tyre on a white nylon centred wheel with ball bearings. Wheel diameter 125mm, tread width 40mm, overall height 155mm, Load capacity 300kg.



|             | NAME    | DATE     |
|-------------|---------|----------|
| DRAWN       | Matt    | 09/10/18 |
| APPROVED BY | Chris   | 09/10/18 |
| SCALE       | 2:5     | 09/10/18 |
| WEIGHT      | 1.266kg | 09/10/18 |

UNLESS OTHERWISE SPECIFIED DIMENSIONS ARE IN MILLIMETRES  
 Unspecified Tolerances  
 Machining ± 0.25mm  
 Fabrication ± 1mm

**BIL** BIL Group Ltd, Porte Marsh Road, Calne Wiltshire, SN11 9BW, United Kingdom  
 Tel +44 (0)1249 822 222 Fax: +44 (0)1249 822 300  
 www.bilgroup.co.uk

TITLE  
**BZEH125NPBJBH12**

| SIZE | DWG NO.                   | REV |
|------|---------------------------|-----|
| A4   | BILCW03BZEH125NPBJBH12_01 | 1   |

FILE NAME BILCW03BZEH125NPBJBH12\_01.PDF SHEET 1 OF 1