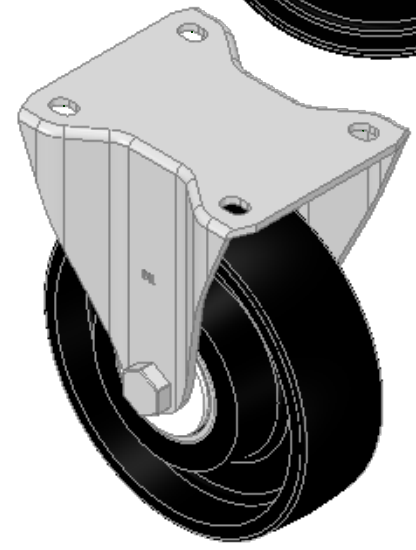
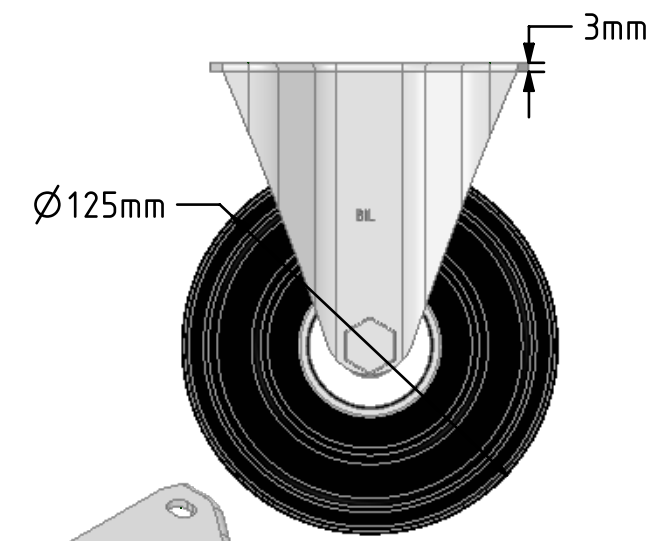
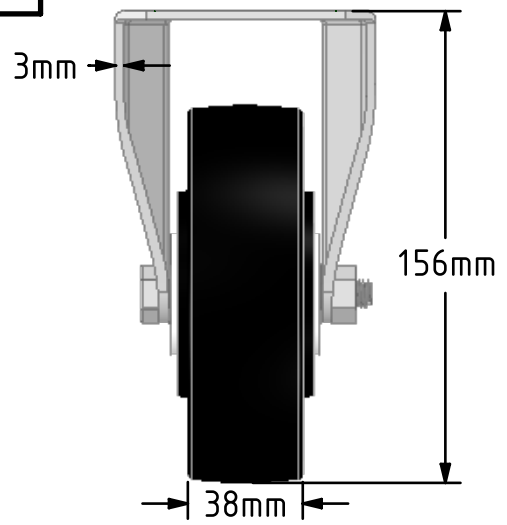
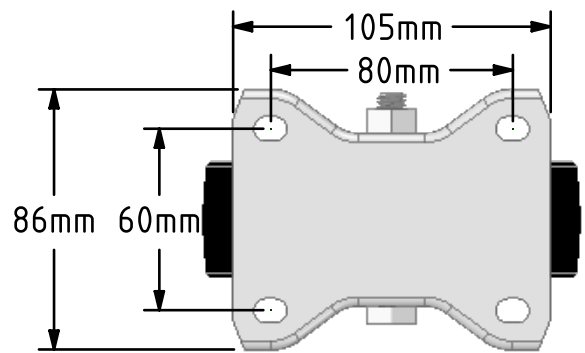


**DRAWING DISCLAIMER**  
 COPYRIGHT OF THIS DRAWING IS RESERVED BY BIL GROUP LTD. IT IS ISSUED ON CONDITION THAT IT IS NOT REPRODUCED, COPIED, OR DISCLOSED TO A THIRD PARTY EITHER WHOLLY OR IN PART WITHOUT THE CONSENT IN WRITING OF BIL GROUP LTD.



**Description:**  
**BZEHF125CIBJ**  
 Pressed steel fixed castor with a top plate fixing fitted with a cast iron wheel with ball bearings. Wheel diameter 125mm, tread width 38mm, overall height 156mm, top plate 105mm x 86mm, hole centres 80mm x 60mm. Load capacity 350kg.



	NAME	DATE
DRAWN	Matt	01/10/18
APPROVED BY	Chris	01/10/18
SCALE	2:5	01/10/18
WEIGHT	2.514kg	01/10/18

 BIL Group Ltd, Porte Marsh Road, Calne Wiltshire, SN11 9BW, United Kingdom  
 Tel +44 (0)1249 822 222 Fax: +44 (0)1249 822 300  
 www.bilgroup.co.uk

TITLE  
**BZEHF125CIBJ**

UNLESS OTHERWISE SPECIFIED DIMENSIONS ARE IN MILLIMETRES  
 Unspecified Tolerances  
 Machining ± 0.25mm  
 Fabrication ± 1mm

SIZE	DWG NO.	REV
A4	BILCW03BZEHF125CIBJ_01	1
FILE NAME	BILCW03BZEHF125CIBJ_01.PDF SHEET 1 OF 1	