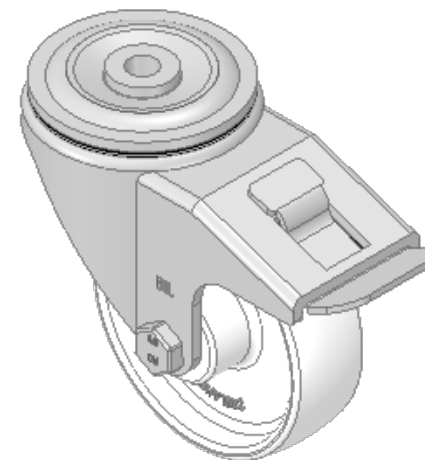
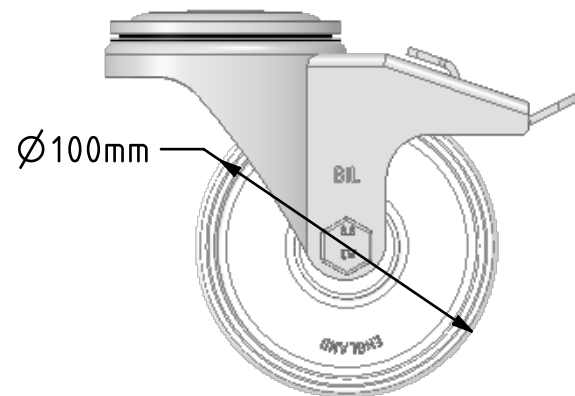
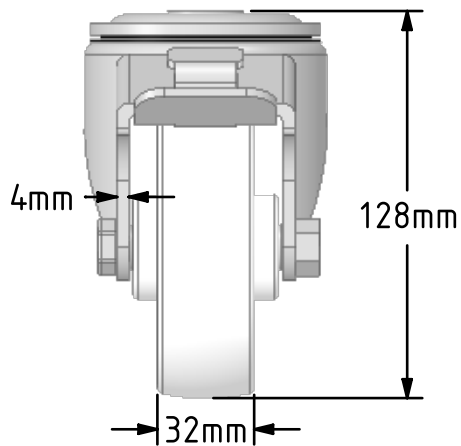
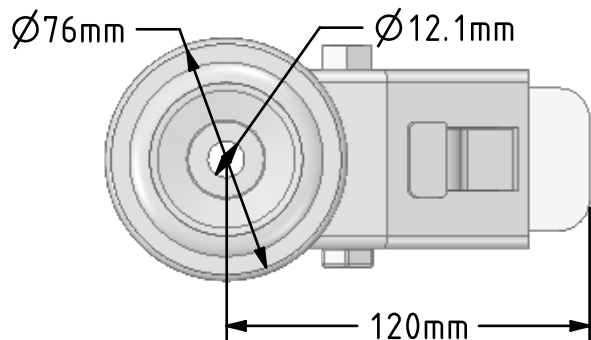


DRAWING DISCLAIMER
 COPYRIGHT OF THIS DRAWING IS RESERVED BY BIL GROUP LTD. IT IS ISSUED ON CONDITION THAT IT IS NOT REPRODUCED, COPIED, OR DISCLOSED TO A THIRD PARTY EITHER WHOLLY OR IN PART WITHOUT THE CONSENT IN WRITING OF BIL GROUP LTD.



Description:
 BZH100NYBBH12SWB

Pressed steel swivel castor with a 12mm bolt hole fixing fitted with a white nylon wheel with a roller bearing and total lock brake. Wheel diameter 100mm, tread width 32mm, overall height 128mm. Load capacity 270kg.



| | NAME | DATE |
|-------------|---------|----------|
| DRAWN | Matt | 23/10/18 |
| APPROVED BY | Tim W | 23/10/18 |
| SCALE | 2:5 | 23/10/18 |
| WEIGHT | 1.015kg | 23/10/18 |



BIL Group Ltd, Porte Marsh Road, Calne
 Wiltshire, SN11 9BW, United Kingdom
 Tel +44 (0)1249 822 222 Fax: +44 (0)1249 822 300
 www.bilgroup.co.uk

| TITLE | | |
|---|----------------------------|-----|
| BZH100NYBBH12SWB | | |
| SIZE | DWG NO. | REV |
| A4 | BILCW03BZH100NYBBH12SWB_02 | 2 |
| FILE NAME BILCW03BZH100NYBBH12SWB_02.PDF SHEET 1 OF 1 | | |

UNLESS OTHERWISE SPECIFIED DIMENSIONS ARE IN MILLIMETRES

Unspecified Tolerances
 Machining ± 0.25mm
 Fabrication ± 1mm