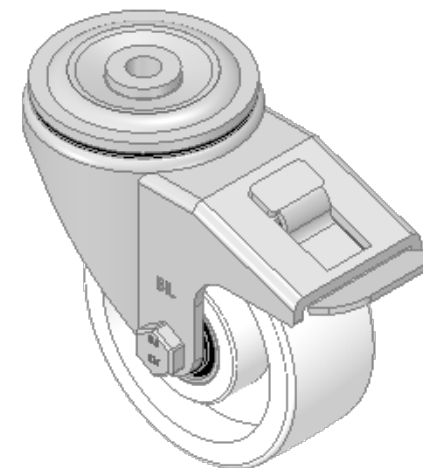
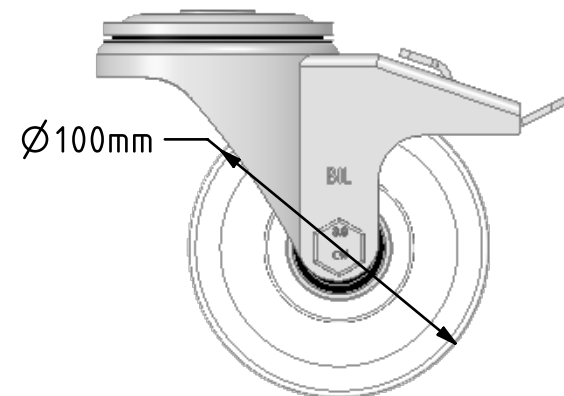
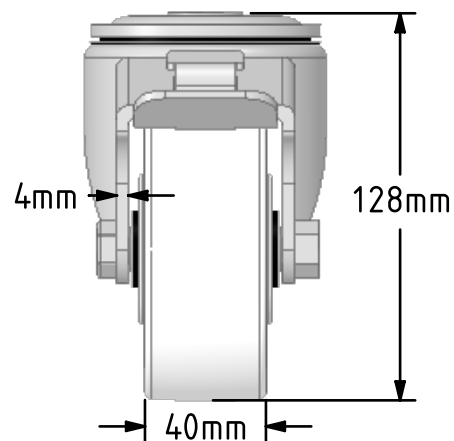
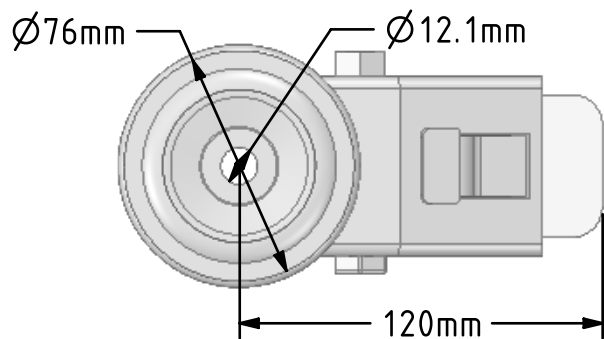
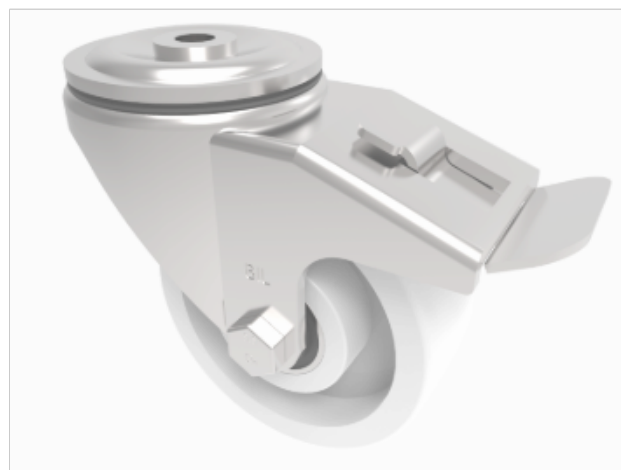


DRAWING DISCLAIMER
 COPYRIGHT OF THIS DRAWING IS RESERVED BY BIL GROUP LTD. IT IS ISSUED ON CONDITION THAT IT IS NOT REPRODUCED, COPIED, OR DISCLOSED TO A THIRD PARTY EITHER WHOLLY OR IN PART WITHOUT THE CONSENT IN WRITING OF BIL GROUP LTD.



Description:
 BZH100NYBJBH12SWB

Pressed steel swivel castor with a 12mm bolt hole fitted with a white nylon wheel with ball bearings and a total lock brake. Wheel diameter 100mm, tread width 40mm, overall height 128mm, load capacity 400kg.



	NAME	DATE
DRAWN	Matt	23/10/18
APPROVED BY	Tim W	23/10/18
SCALE	2:5	23/10/18
WEIGHT	1.165kg	23/10/18

UNLESS OTHERWISE SPECIFIED DIMENSIONS ARE IN MILLIMETRES

Unspecified Tolerances
 Machining ± 0.25mm
 Fabrication ± 1mm



BIL Group Ltd, Porte Marsh Road, Calne
 Wiltshire, SN11 9BW, United Kingdom
 Tel +44 (0)1249 822 222 Fax: +44 (0)1249 822 300
 www.bilgroup.co.uk

TITLE

BZH100NYBJBH12SWB

SIZE DWG NO.

A4

BILCW03BZH100NYBJBH12SWB_01

REV

1

FILE NAME BILCW03BZH100NYBJBH12SWB_01.PDF SHEET 1 OF 1