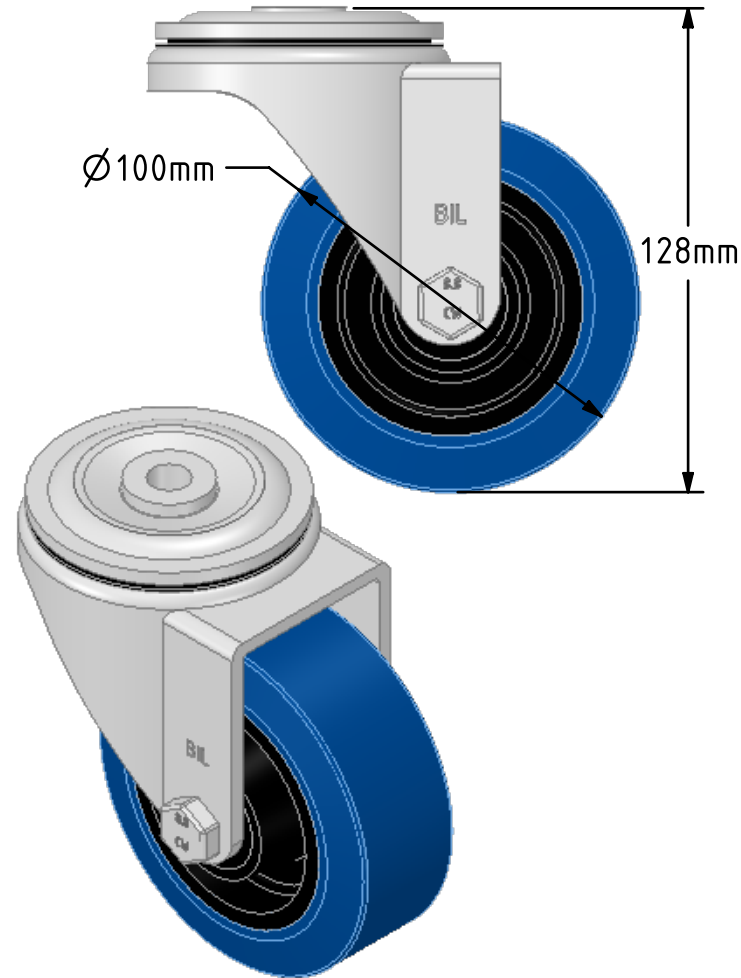
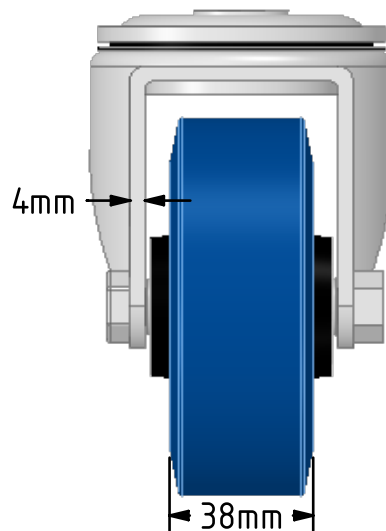
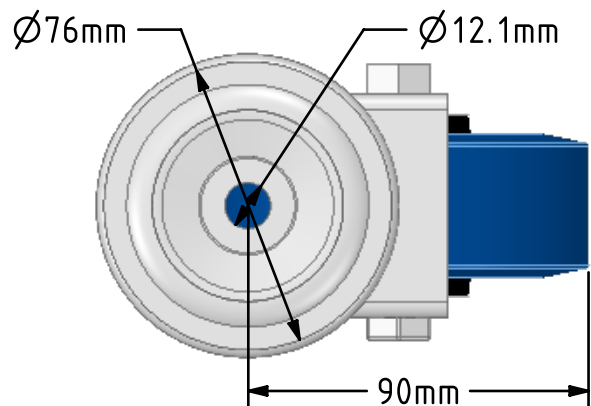
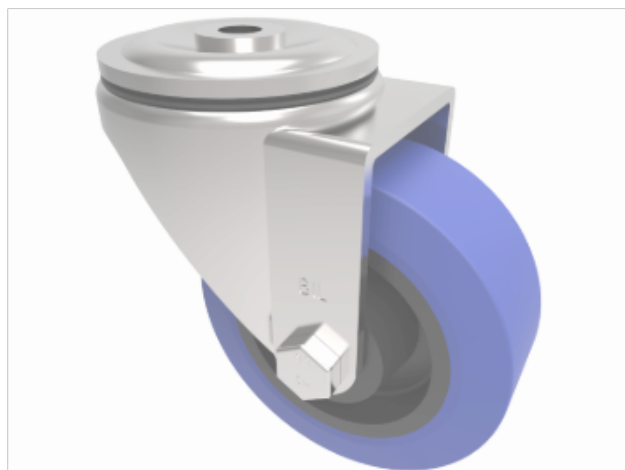


DRAWING DISCLAIMER
 COPYRIGHT OF THIS DRAWING IS RESERVED BY BIL GROUP LTD. IT IS ISSUED ON CONDITION THAT IT IS NOT REPRODUCED, COPIED, OR DISCLOSED TO A THIRD PARTY EITHER WHOLLY OR IN PART WITHOUT THE CONSENT IN WRITING OF BIL GROUP LTD.



Description:
 BZH100RNBBH12

Pressed steel swivel castor with a 12mm bolt hole fixing fitted with a blue 75 shore A elastic rubber tyre on black nylon centred wheel with a roller bearing. Wheel diameter 100mm, tread width 38mm, overall height 128mm. Load capacity 250kg.



| | NAME | DATE |
|-------------|---------|----------|
| DRAWN | Matt | 24/10/18 |
| APPROVED BY | Tim W | 24/10/18 |
| SCALE | 1:2 | 24/10/18 |
| WEIGHT | 0.998kg | 24/10/18 |

UNLESS OTHERWISE SPECIFIED DIMENSIONS ARE IN MILLIMETRES
 Unspecified Tolerances
 Machining ± 0.25mm
 Fabrication ± 1mm

 BIL Group Ltd, Porte Marsh Road, Calne Wiltshire, SN11 9BW, United Kingdom
 Tel +44 (0)1249 822 222 Fax: +44 (0)1249 822 300
 www.bilgroup.co.uk

| | | | |
|-----------|---|---------------|--|
| TITLE | | BZH100RNBBH12 | |
| SIZE | DWG NO. | REV | |
| A4 | BILCW03BZH100RNBBH12__02 | 2 | |
| FILE NAME | BILCW03BZH100RNBBH12__02.PDF SHEET 1 OF 1 | | |