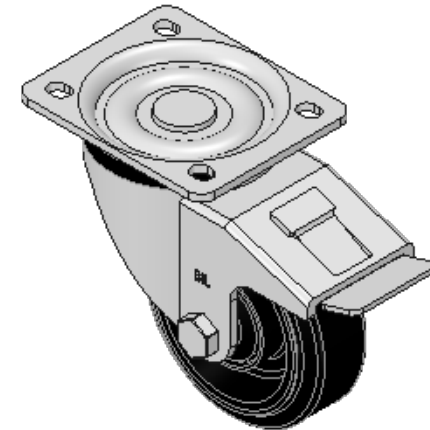
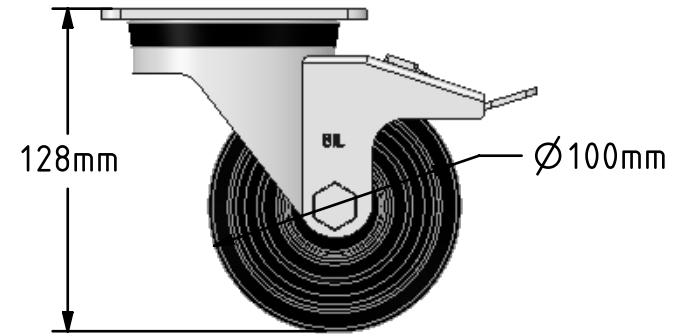
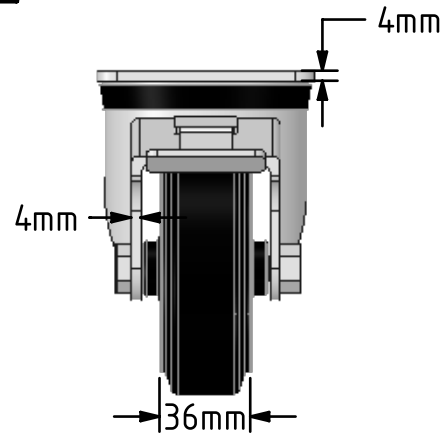
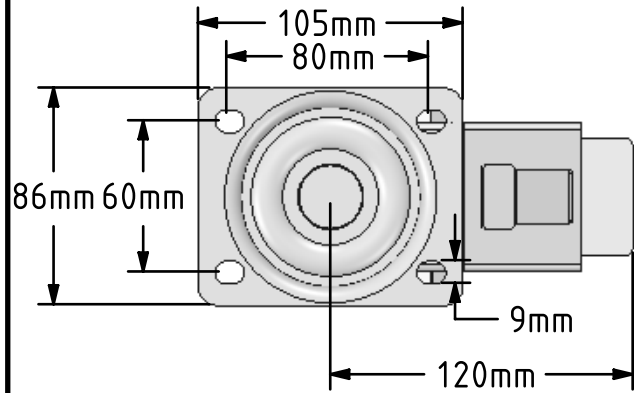


DRAWING DISCLAIMER


COPYRIGHT OF THIS DRAWING IS RESERVED BY BIL GROUP LTD. IT IS ISSUED ON CONDITION THAT IT IS NOT REPRODUCED, COPIED, OR DISCLOSED TO A THIRD PARTY EITHER WHOLLY OR IN PART WITHOUT THE CONSENT IN WRITING OF BIL GROUP LTD.



Description:
BZH100RNBJECSWB

Press steel swivel castor with a top plate fixing fitted with a 65 shore A black elastic electrically conductive rubber wheel on a black nylon centre with a ball bearing and total lock brake. Wheel diameter 100mm, tread width 36mm, overall height 128mm, top plate 105mm x 85mm, hole centres 80mm x 60mm Load capacity 200kg. Conductivity range is 10³ ohm to 10⁴ ohm



| | | | |
|---|---------|---------------------------|---|
| | NAME | DATE |  BIL Group Ltd, Porte Marsh Road, Calne Wiltshire, SN11 9BW, United Kingdom Tel +44 (0)1249 822 222 Fax: +44 (0)1249 822 300 www.bilgroup.co.uk |
| DRAWN | Matt | 01/08/17 | |
| APPROVED BY | Tim W | 01/08/17 | |
| SCALE | 1:3 | 01/08/17 | |
| WEIGHT | 1.259kg | 01/08/17 | TITLE |
| UNLESS OTHERWISE SPECIFIED DIMENSIONS ARE IN MILLIMETRES Unspecified Tolerances Machining ± 0.25mm Fabrication ± 1mm | | | BZH100RNBJECSWB |
| SIZE | | DWG NO. | REV |
| A4 | | BILCW03BZH100RNBJECSWB_01 | 1 |
| FILE NAME | | | SHEET 1 OF 1 |
| BILCW03BZH100RNBJECSWB_01.PDF | | | |