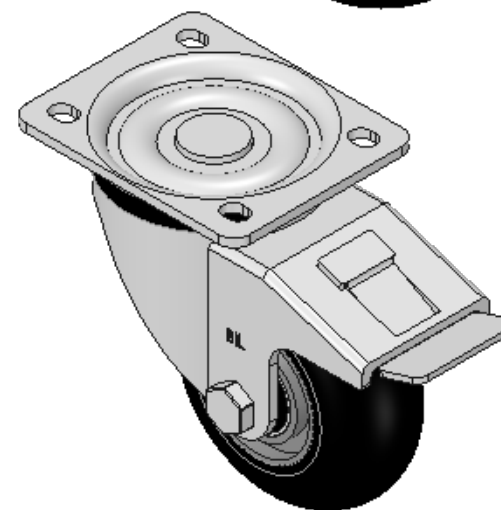
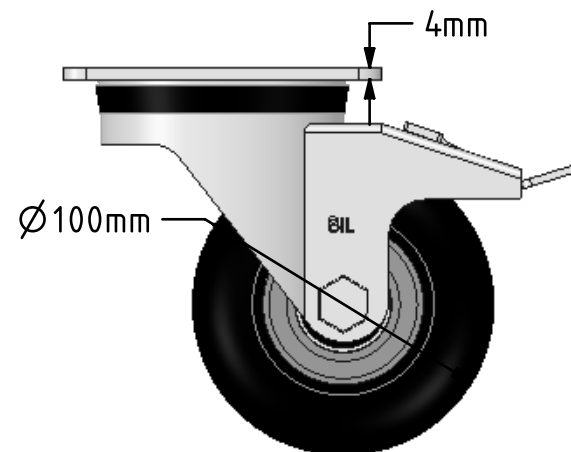
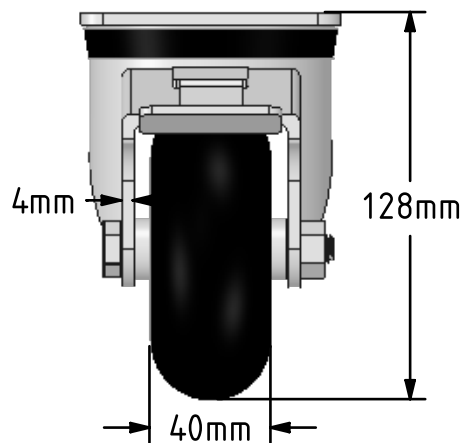
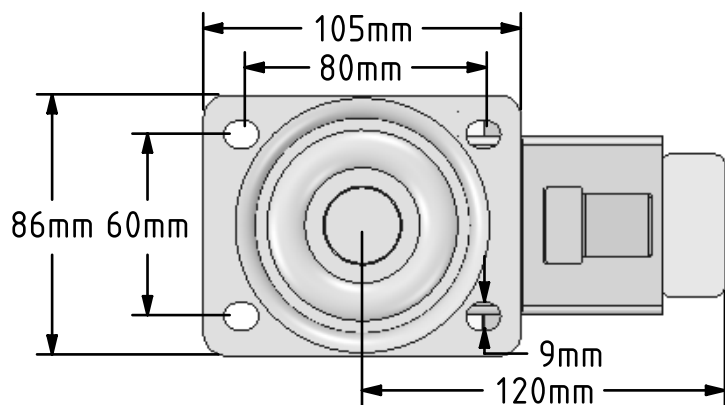


**DRAWING DISCLAIMER**  
 COPYRIGHT OF THIS DRAWING IS RESERVED BY BIL GROUP LTD. IT IS ISSUED ON CONDITION THAT IT IS NOT REPRODUCED, COPIED, OR DISCLOSED TO A THIRD PARTY EITHER WHOLLY OR IN PART WITHOUT THE CONSENT IN WRITING OF BIL GROUP LTD.



**Description:**  
 BZH100SRERBJSWB

Pressed steel swivel castor with a top plate fixing with a black ergonomic high elastic natural 55 shore A round profile rubber tyred wheel with a aluminium centre with a ball bearing and a total lock brake. Wheel diameter 100mm, tread width 40mm, overall height 128mm, top plate 105mm x 86mm, hole centres 80mm x 60mm. Load capacity 150kg. REACH compliant also PAH-Free rubber to confirm to EU-directive 2005/69/EC, also available with flat tread details on request



	NAME	DATE
DRAWN	Matt	02/02/18
APPROVED BY	Chris	02/02/18
SCALE	2:5	02/02/18
WEIGHT	1.447kg	02/02/18

UNLESS OTHERWISE SPECIFIED DIMENSIONS ARE IN MILLIMETRES

Unspecified Tolerances  
 Machining ± 0.25mm  
 Fabrication ± 1mm



BIL Group Ltd, Porte Marsh Road, Calne  
 Wiltshire, SN11 9BW, United Kingdom  
 Tel +44 (0)1249 822 222 Fax: +44 (0)1249 822 300  
 www.bilgroup.co.uk

TITLE

**BZH100SRERBJSWB**

SIZE	DWG NO.	REV
A4	BILCW03BZH100SRERBJSWB_01	1

FILE NAME BILCW03BZH100SRERBJSWB\_01.PDF SHEET 1 OF 1