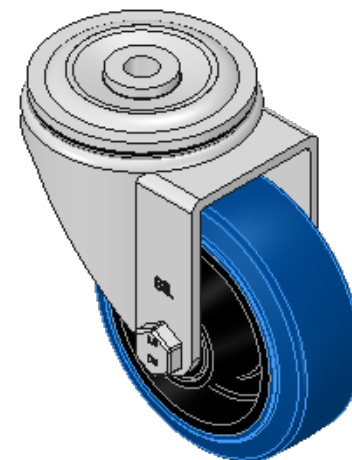
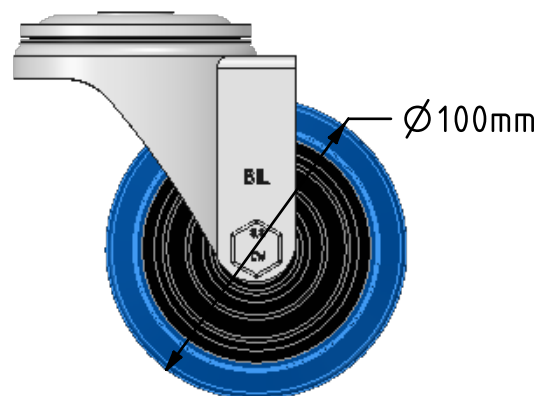
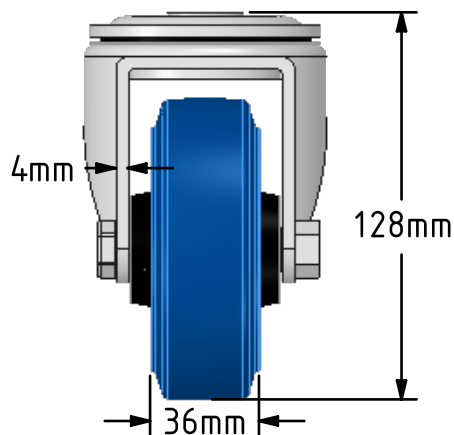
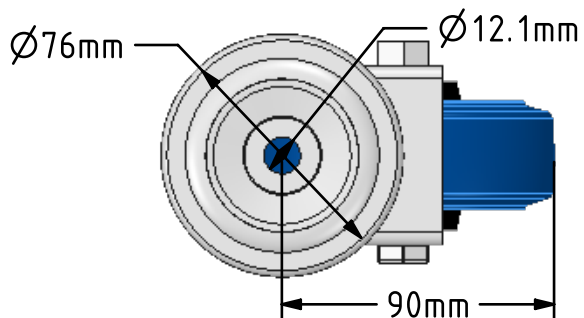
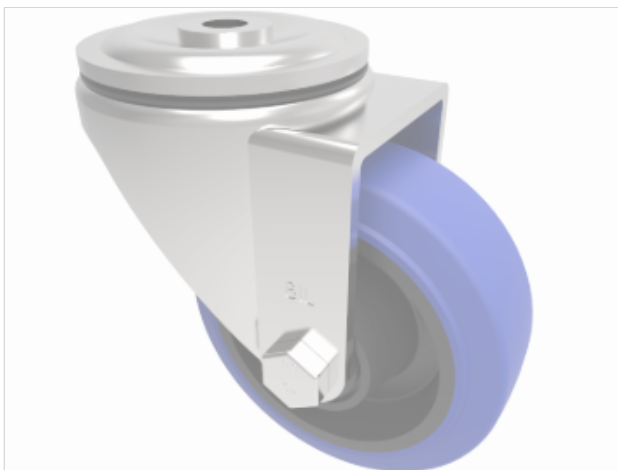



DRAWING DISCLAIMER  
 COPYRIGHT OF THIS DRAWING IS RESERVED BY BIL GROUP LTD. IT IS ISSUED ON CONDITION THAT IT IS NOT REPRODUCED, COPIED, OR DISCLOSED TO A THIRD PARTY EITHER WHOLLY OR IN PART WITHOUT THE CONSENT IN WRITING OF BIL GROUP LTD.



Description:  
 BZH100SRNBBH12

Pressed steel swivel castor with a 12mm bolt hole fixing fitted with a 65 shore A blue elastic rubber tyred black nylon centred wheel with a roller bearing. Wheel diameter 100mm, tread width 36mm, overall height 128mm. Load capacity 200kg. REACH compliant also PAH-Free rubber to confirm to EU-directive 2005/69/EC



	NAME	DATE	 BIL Group Ltd, Porte Marsh Road, Calne Wiltshire, SN11 9BW, United Kingdom Tel +44 (0)1249 822 222 Fax: +44 (0)1249 822 300 www.bilgroup.co.uk
DRAWN	Matt	07/02/18	
APPROVED BY	Tim W	07/02/18	
SCALE	2:5	07/02/18	
WEIGHT	0.947kg	07/02/18	TITLE
UNLESS OTHERWISE SPECIFIED DIMENSIONS ARE IN MILLIMETRES  Unspecified Tolerances Machining ± 0.25mm Fabrication ± 1mm			BZH100SRNBBH12
SIZE	DWG NO.	REV	
A4	BILCW03BZH100SRNBBH12_01	1	
FILE NAME	BILCW03BZH100SRNBBH12_01.PDF		SHEET 1 OF 1