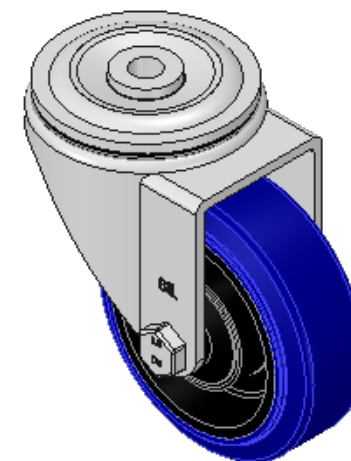
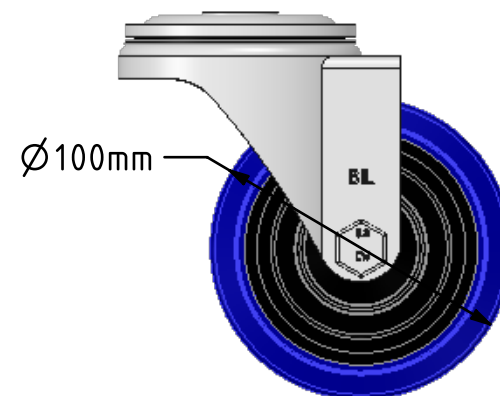
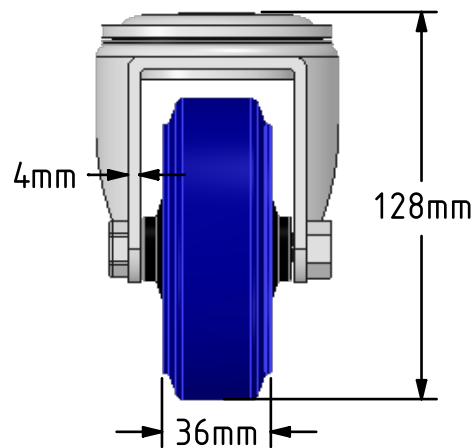
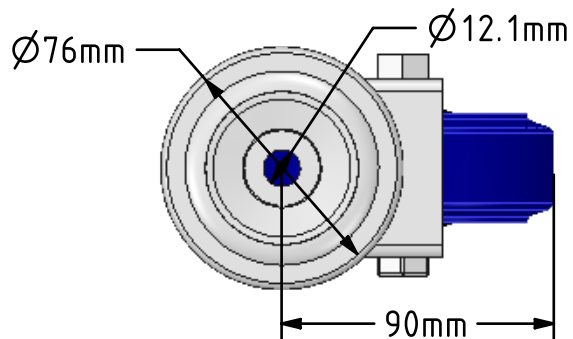
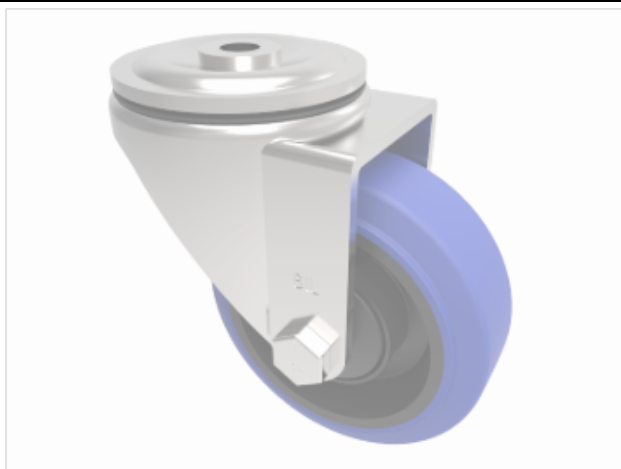


DRAWING DISCLAIMER  
 COPYRIGHT OF THIS DRAWING IS RESERVED BY BIL GROUP LTD. IT IS ISSUED ON CONDITION THAT IT IS NOT REPRODUCED, COPIED, OR DISCLOSED TO A THIRD PARTY EITHER WHOLLY OR IN PART WITHOUT THE CONSENT IN WRITING OF BIL GROUP LTD.



Description:  
 BZH100SRNJBH12

Pressed steel swivel castor with 12mm bolt hole fitted with a 65 shore A blue elastic rubber tyre on black nylon centre with ball bearing. Wheel diameter 100mm, tread width 36mm, overall height 128mm, Load capacity 200kg. REACH compliant also PAH-Free rubber to confirm to EU-directive 2005/69/EC



	NAME	DATE
DRAWN	Matt	14/06/18
APPROVED BY	Tim W	14/06/18
SCALE	2:5	14/06/18
WEIGHT	0.91kg	14/06/18

UNLESS OTHERWISE SPECIFIED DIMENSIONS ARE IN MILLIMETRES

Unspecified Tolerances  
 Machining ± 0.25mm  
 Fabrication ± 1mm



BIL Group Ltd, Porte Marsh Road, Calne  
 Wiltshire, SN11 9BW, United Kingdom  
 Tel +44 (0)1249 822 222 Fax: +44 (0)1249 822 300  
 www.bilgroup.co.uk

TITLE

BZH100SRNJBH12

SIZE	DWG NO.	REV
A4	BILCW03BZH100SRNJBH12_01	1

FILE NAME BILCW03BZH100SRNJBH12\_01.PDF SHEET 1 OF 1