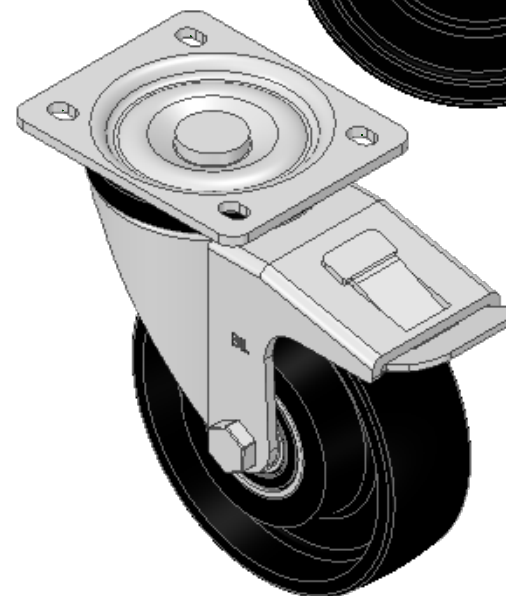
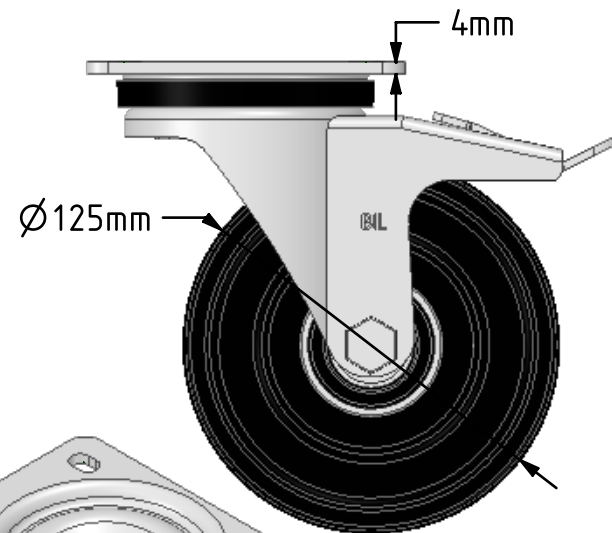
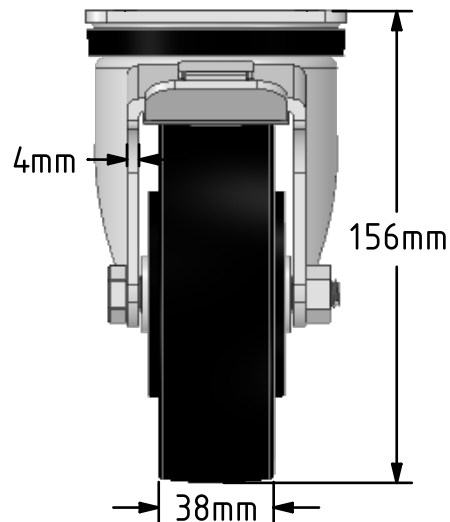
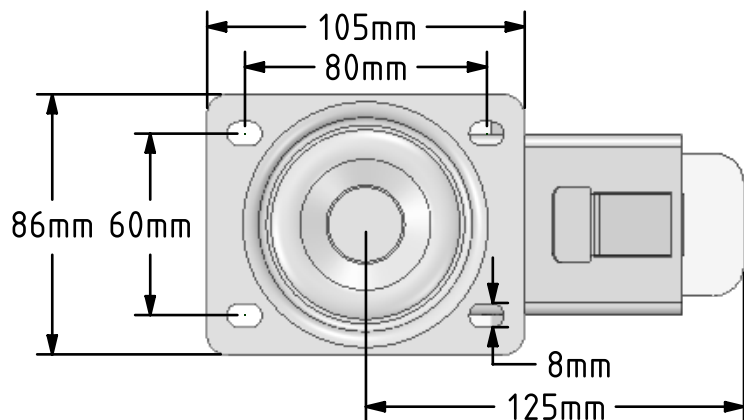


DRAWING DISCLAIMER
 COPYRIGHT OF THIS DRAWING IS RESERVED BY BIL GROUP LTD. IT IS ISSUED ON CONDITION THAT IT IS NOT REPRODUCED, COPIED, OR DISCLOSED TO A THIRD PARTY EITHER WHOLLY OR IN PART WITHOUT THE CONSENT IN WRITING OF BIL GROUP LTD.



Description:
 BZH125CIBJSWB

Pressed steel swivel castor with a top plate fixing with a cast iron wheel with ball journal bearings and total lock brake. Wheel diameter 125mm, tread width 38mm, overall height 156mm, top plate 105mm x 86mm, hole centres 80mm x 60mm. Load capacity 400kg.



	NAME	DATE
DRAWN	Matt	25/03/19
APPROVED BY	Chris	25/03/19
SCALE	2:5	25/03/19
WEIGHT	3.074kg	25/03/19

UNLESS OTHERWISE SPECIFIED DIMENSIONS ARE IN MILLIMETRES

Unspecified Tolerances
 Machining ± 0.25mm
 Fabrication ± 1mm



BIL Group Ltd, Porte Marsh Road, Calne
 Wiltshire, SN11 9BW, United Kingdom
 Tel +44 (0)1249 822 222 Fax: +44 (0)1249 822 300
 www.bilgroup.co.uk

TITLE

BZH125CIBJSWB

SIZE	DWG NO.	REV
A4	BILCW03BZH125CIBJSWB_01	1

FILE NAME BILCW03BZH125CIBJSWB_01.PDF SHEET 1 OF 1