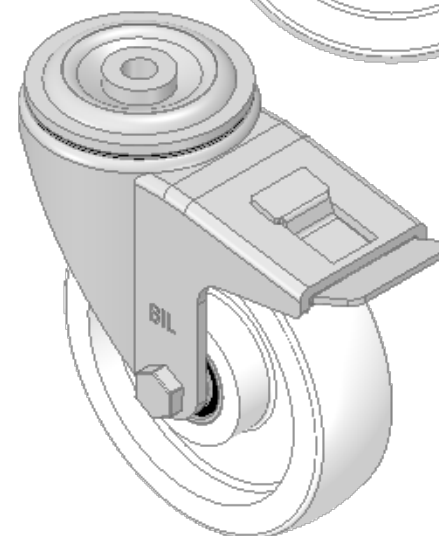
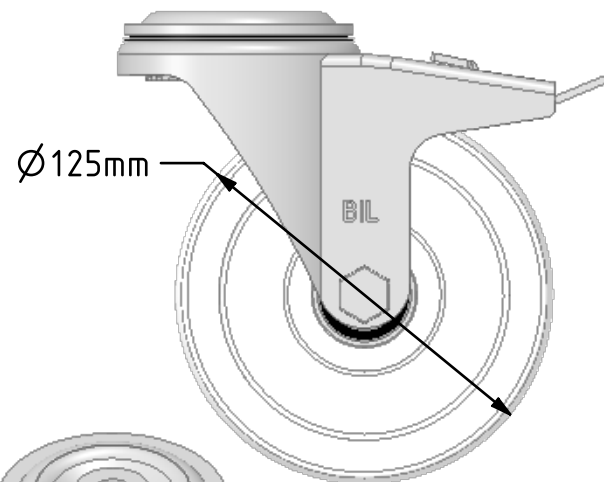
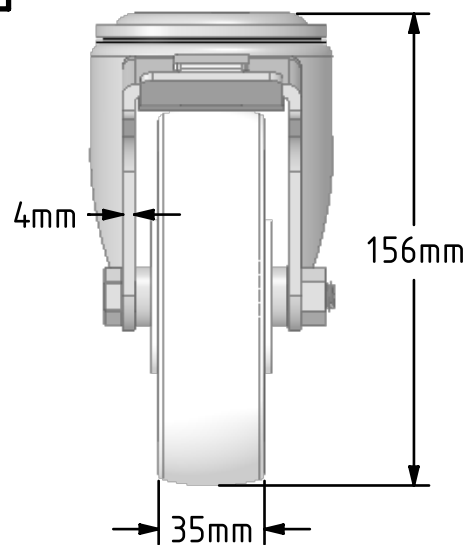
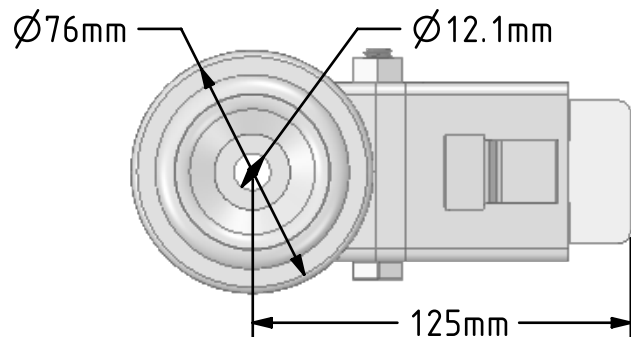


DRAWING DISCLAIMER  
 COPYRIGHT OF THIS DRAWING IS RESERVED BY BIL GROUP LTD. IT IS ISSUED ON CONDITION THAT IT IS NOT REPRODUCED, COPIED, OR DISCLOSED TO A THIRD PARTY EITHER WHOLLY OR IN PART WITHOUT THE CONSENT IN WRITING OF BIL GROUP LTD.



Description:  
 BZH125NYBJBH12SWB

Pressed steel swivel castor with a 12mm bolt hole fitted with a white nylon wheel with ball bearings. Wheel diameter 125mm, tread width 35mm, overall height 156mm, Load capacity 400kg.



	NAME	DATE
DRAWN	Matt	24/10/18
APPROVED BY	Tim W	24/10/18
SCALE	2.5	24/10/18
WEIGHT	1.316kg	24/10/18

UNLESS OTHERWISE SPECIFIED DIMENSIONS ARE IN MILLIMETRES

Unspecified Tolerances  
 Machining ± 0.25mm  
 Fabrication ± 1mm



BIL Group Ltd, Porte Marsh Road, Calne  
 Wiltshire, SN11 9BW, United Kingdom  
 Tel +44 (0)1249 822 222 Fax: +44 (0)1249 822 300  
 www.bilgroup.co.uk

TITLE

BZH125NYBJBH12SWB

SIZE	DWG NO.	REV
A4	BILCW03BZH125NYBJBH12SWB__01	1

FILE NAME BILCW03BZH125NYBJBH12SWB\_\_01.PDF SHEET 1 OF 1