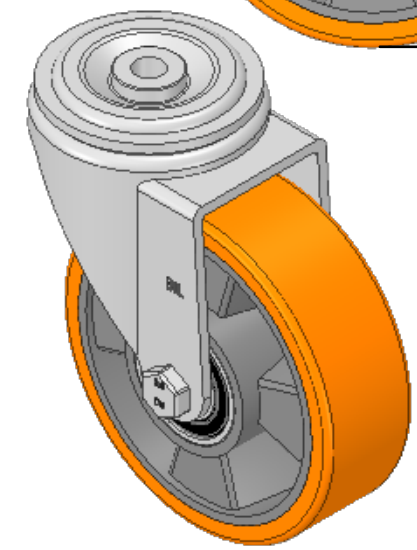
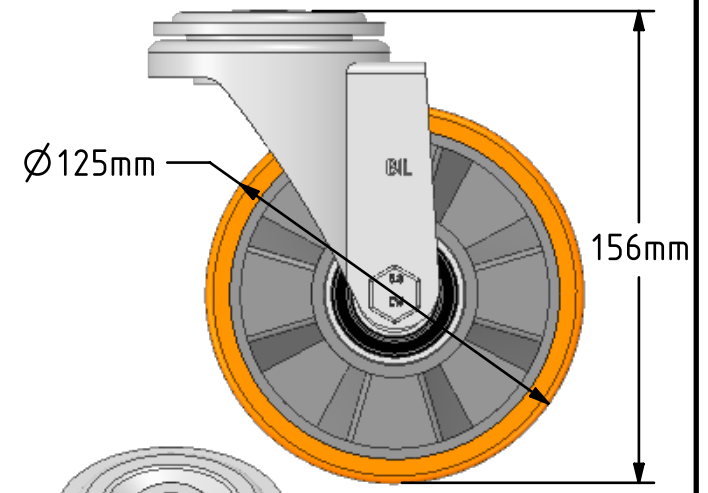
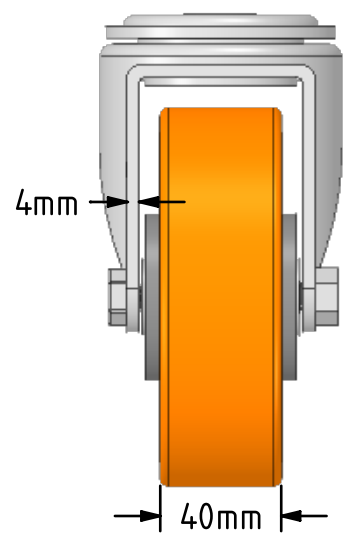
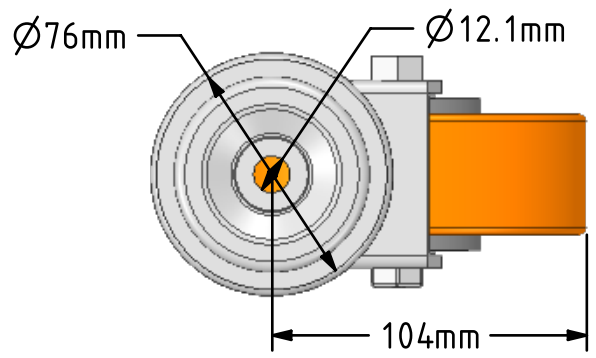


DRAWING DISCLAIMER
 COPYRIGHT OF THIS DRAWING IS RESERVED BY BIL GROUP LTD. IT IS ISSUED ON CONDITION THAT IT IS NOT REPRODUCED, COPIED, OR DISCLOSED TO A THIRD PARTY EITHER WHOLLY OR IN PART WITHOUT THE CONSENT IN WRITING OF BIL GROUP LTD.



Description:
BZH125PABJBH12
 Pressed steel swivel castor with a 12mm bolt hole fixing fitted with a polyurethane tyre on aluminium centred wheel. Wheel diameter 125mm, tread width 40mm, overall height 156mm. Load capacity 300kg.



	NAME	DATE
DRAWN	Matt	03/12/18
APPROVED BY	Chris	03/12/18
SCALE	2:5	03/12/18
WEIGHT	1.461kg	03/12/18

UNLESS OTHERWISE SPECIFIED DIMENSIONS ARE IN MILLIMETRES
 Unspecified Tolerances
 Machining ± 0.25mm
 Fabrication ± 1mm

BIL BIL Group Ltd, Porte Marsh Road, Calne Wiltshire, SN11 9BW, United Kingdom
 Tel +44 (0)1249 822 222 Fax: +44 (0)1249 822 300
 www.bilgroup.co.uk

TITLE
BZH125PABJBH12

SIZE	DWG NO.	REV
A4	BILCW03BZH125PABJBH12__01	1

FILE NAME BILCW03BZH125PABJBH12__01.PDF SHEET 1 OF 1