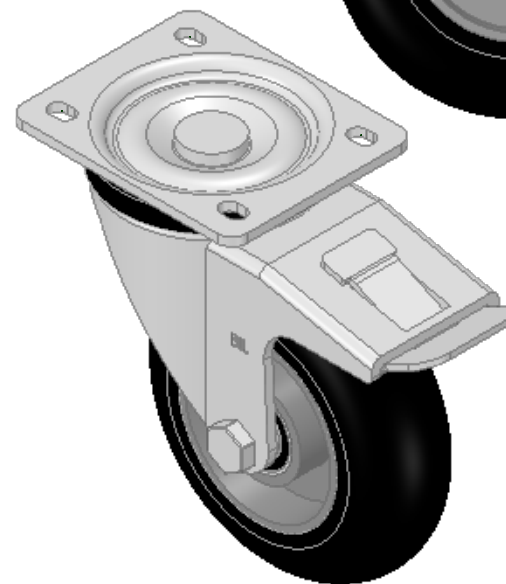
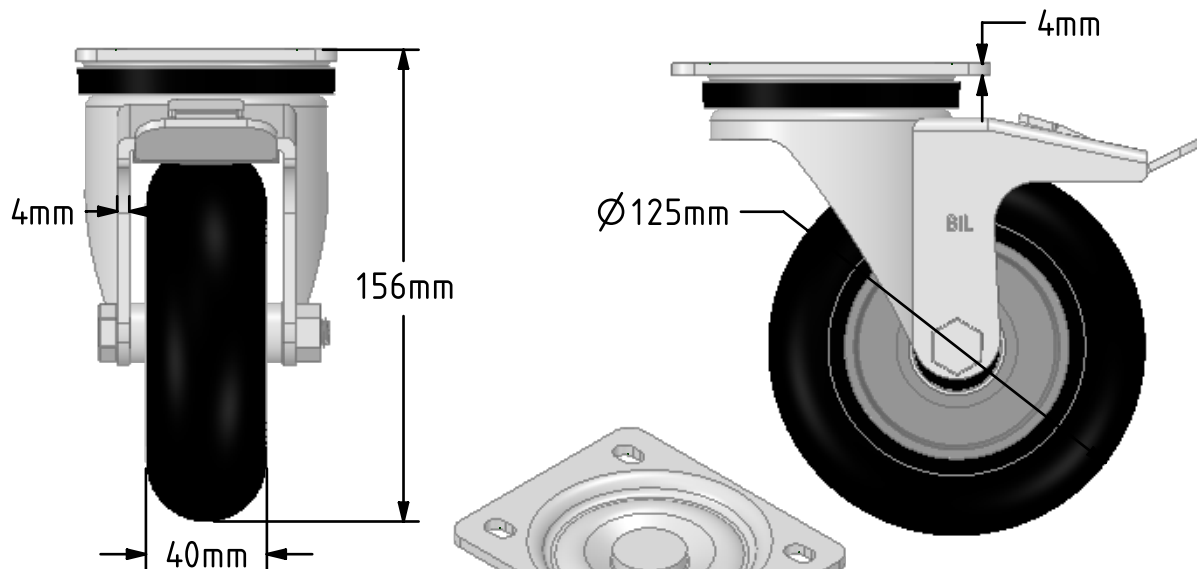
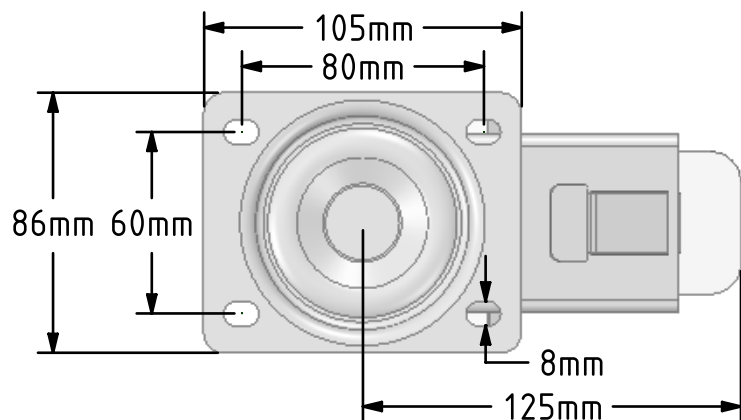


DRAWING DISCLAIMER
 COPYRIGHT OF THIS DRAWING IS RESERVED BY BIL GROUP LTD. IT IS ISSUED ON CONDITION THAT IT IS NOT REPRODUCED, COPIED, OR DISCLOSED TO A THIRD PARTY EITHER WHOLLY OR IN PART WITHOUT THE CONSENT IN WRITING OF BIL GROUP LTD.



Description:
 BZH125SRERBJSWB

Pressed steel swivel castor with a top plate fixing with a black ergonomic high elastic natural 55 shore A round profile rubber tyre wheel with an aluminium centre with a ball bearing and total lock brake. Wheel diameter 125mm, tread width 40mm, overall height 156mm, top plate 105mm x 86mm, hole centres 80mm x 60mm. Load capacity 200kg. REACH compliant also PAH-Free rubber to confirm to EU-directive 2005/69/EC, also available with flat tread details on request



	NAME	DATE
DRAWN	Matt	18/10/18
APPROVED BY	Tim W	18/10/18
SCALE	2:5	18/10/18
WEIGHT	1.664kg	18/10/18

BIL Group Ltd, Porte Marsh Road, Calne
 Wiltshire, SN11 9BW, United Kingdom
 Tel +44 (0)1249 822 222 Fax: +44 (0)1249 822 300
 www.bilgroup.co.uk

TITLE
BZH125SRERBJSWB

UNLESS OTHERWISE SPECIFIED DIMENSIONS ARE IN MILLIMETRES		SIZE	DWG NO.	REV
Unspecified Tolerances Machining ± 0.25mm Fabrication ± 1mm		A4	BILCW03BZH125SRERBJSWB_01	1
FILE NAME		BILCW03BZH125SRERBJSWB_01.PDF SHEET 1 OF 1		