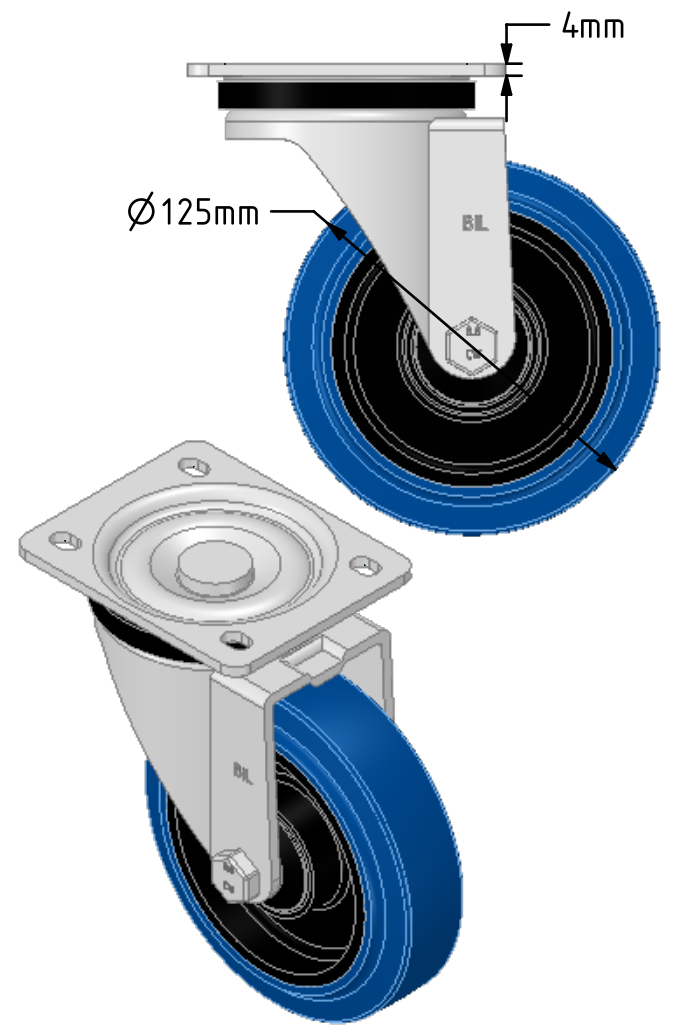
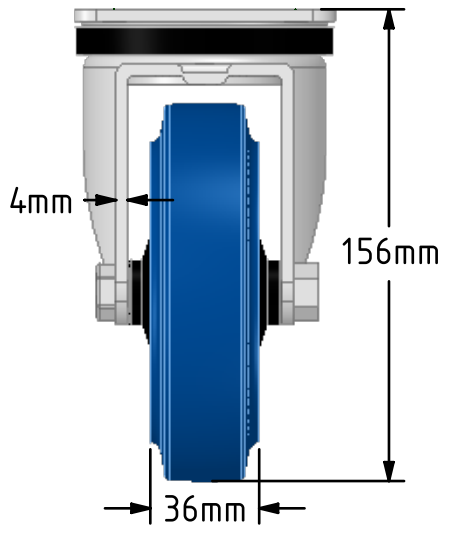
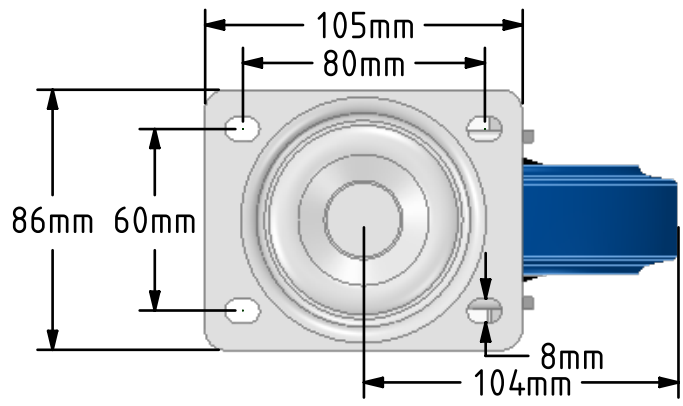
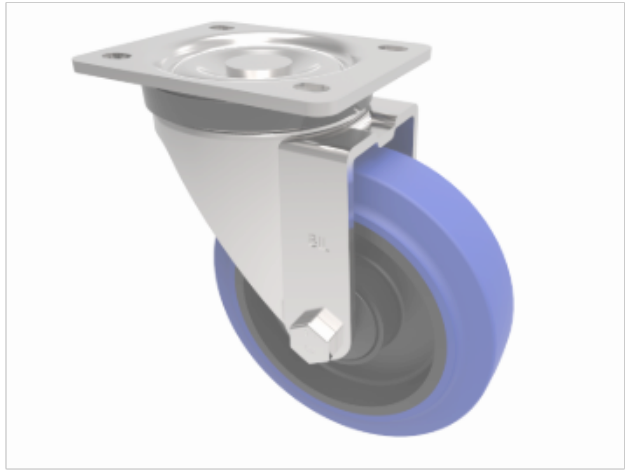


DRAWING DISCLAIMER
 COPYRIGHT OF THIS DRAWING IS RESERVED BY BIL GROUP LTD. IT IS ISSUED ON CONDITION THAT IT IS NOT REPRODUCED, COPIED, OR DISCLOSED TO A THIRD PARTY EITHER WHOLLY OR IN PART WITHOUT THE CONSENT IN WRITING OF BIL GROUP LTD.



Description:
 BZH125SRNBJ
 Pressed steel swivel castor with flat top plate fixing fitted with a 65 Shore A blue elastic rubber tyre on black nylon centre with single ball bearing and retaining caps. Wheel diameter 125mm, tread width 36mm, overall height 156mm, plate size 105mm x 86mm, hole centres 80mm x 60mm. Load capacity 250kg. REACH compliant also PAH-Free rubber to confirm to EU-directive 2005/69/EC



	NAME	DATE
DRAWN	Matt	17/10/18
APPROVED BY	Tim W	17/10/18
SCALE	2:5	17/10/18
WEIGHT	1.217kg	17/10/18

BIL Group Ltd, Porte Marsh Road, Calne
 Wiltshire, SN11 9BW, United Kingdom
 Tel +44 (0)1249 822 222 Fax: +44 (0)1249 822 300
 www.bilgroup.co.uk

TITLE
BZH125SRNBJ

UNLESS OTHERWISE SPECIFIED DIMENSIONS ARE IN MILLIMETRES
 Unspecified Tolerances
 Machining ± 0.25mm
 Fabrication ± 1mm

SIZE	DWG NO.	REV
A4	BILCW03BZH125SRNBJ_01	1
FILE NAME	BILCW03BZH125SRNBJ_01.PDF SHEET 1 OF 1	