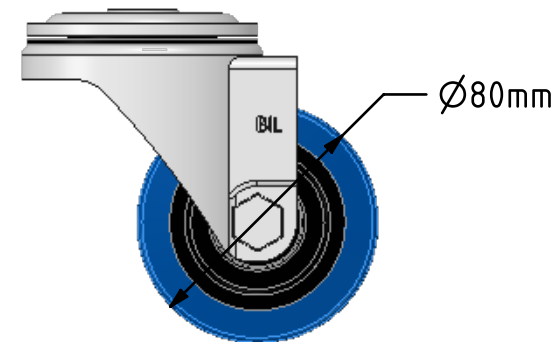
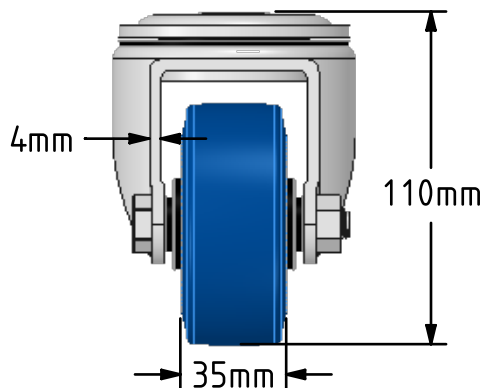
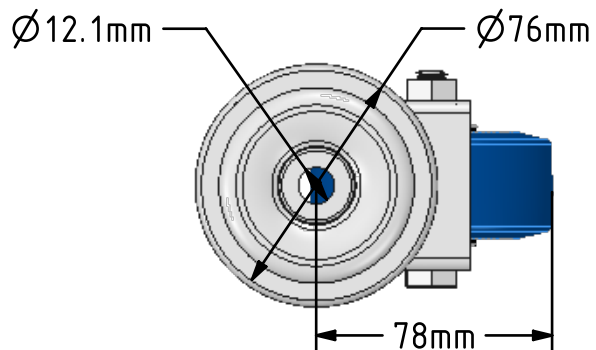
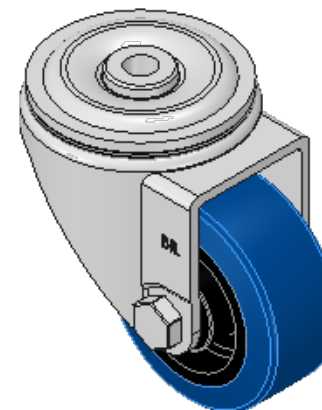



DRAWING DISCLAIMER
 COPYRIGHT OF THIS DRAWING IS RESERVED BY BIL GROUP LTD. IT IS ISSUED ON CONDITION THAT IT IS NOT REPRODUCED, COPIED, OR DISCLOSED TO A THIRD PARTY EITHER WHOLLY OR IN PART WITHOUT THE CONSENT IN WRITING OF BIL GROUP LTD.



Description:
 BZH80RNBBH12

Pressed steel swivel 12mm bolt hole castor fitted with a blue 65 shore A elastic rubber tyred wheel with a black nylon centre with a roller bearing. Wheel diameter 80mm, Tread width 35mm, Overall Height 110mm, Load Capacity 150kg REACH compliant also PAH-Free rubber to confirm to EU-directive 2005/69/EC



	NAME	DATE	 BIL Group Ltd, Porte Marsh Road, Calne Wiltshire, SN11 9BW, United Kingdom Tel +44 (0)1249 822 222 Fax: +44 (0)1249 822 300 www.bilgroup.co.uk
DRAWN	Matf	16/02/17	
APPROVED BY		16/02/17	
SCALE	2:5	16/02/17	TITLE
WEIGHT	0.816kg	16/02/17	BZH80RNBBH12
UNLESS OTHERWISE SPECIFIED DIMENSIONS ARE IN MILLIMETRES			SIZE DWG NO.
Unspecified Tolerances Machining ± 0.25mm Fabrication ± 1mm			A4 BILCW03BZH80RNBBH12_01
			REV 1
			FILE NAME BILCW03BZH80RNBBH12_01.SCD0C SHEET 1 OF 1