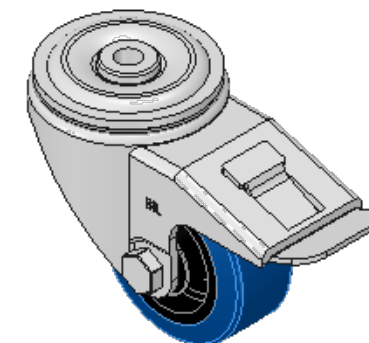
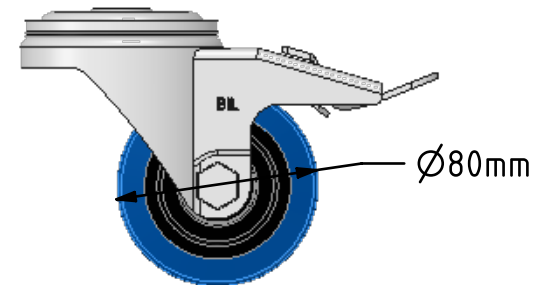
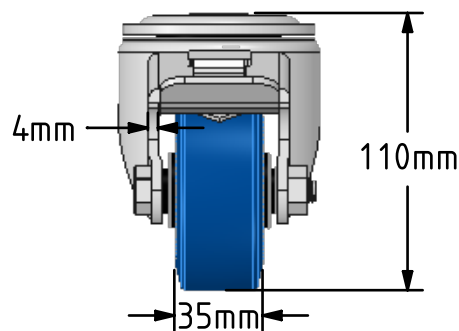
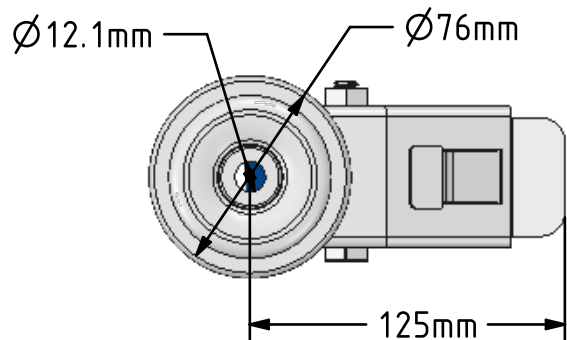
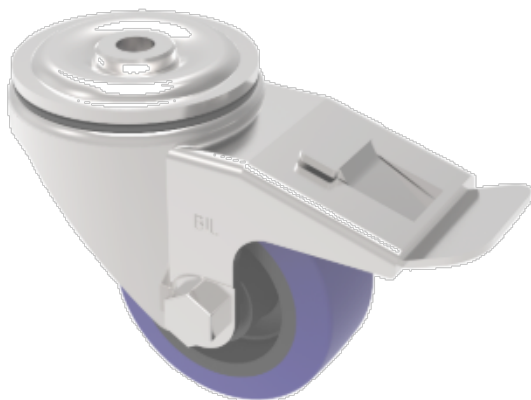


DRAWING DISCLAIMER  
 COPYRIGHT OF THIS DRAWING IS RESERVED BY BIL GROUP LTD. IT IS ISSUED ON CONDITION THAT IT IS NOT REPRODUCED, COPIED, OR DISCLOSED TO A THIRD PARTY EITHER WHOLLY OR IN PART WITHOUT THE CONSENT IN WRITING OF BIL GROUP LTD.



**Description:**  
 BZH80RNBBH12SWB

Pressed steel swivel 12mm bolt hole castor fitted with a blue 65 shore A elastic elastic rubber tyred wheel with a black nylon centre with a roller bearing and a total lock brake. Wheel diameter 80mm, Tread width 35mm, Overall Height 110mm, Load Capacity 150kg. REACH compliant also PAH-Free rubber to confirm to EU-directive 2005/69/EC



	NAME	DATE
DRAWN	Matt	16/02/17
APPROVED BY	Tim W	16/02/17
SCALE	1:3	16/02/17
WEIGHT	1.016kg	16/02/17

UNLESS OTHERWISE SPECIFIED DIMENSIONS ARE IN MILLIMETRES  
 Unspecified Tolerances  
 Machining ± 0.25mm  
 Fabrication ± 1mm

 BIL Group Ltd, Porte Marsh Road, Calne Wiltshire, SN11 9BW, United Kingdom  
 Tel +44 (0)1249 822 222 Fax: +44 (0)1249 822 300  
 www.bilgroup.co.uk

TITLE	BZH80RNBBH12SWB	
-------	-----------------	--

SIZE	DWG NO.	REV
A4	BILCW03BZH80RNBBH12SWB_01	1

FILE NAME BILCW03BZH80RNBBH12SWB\_01.PDF SHEET 1 OF 1