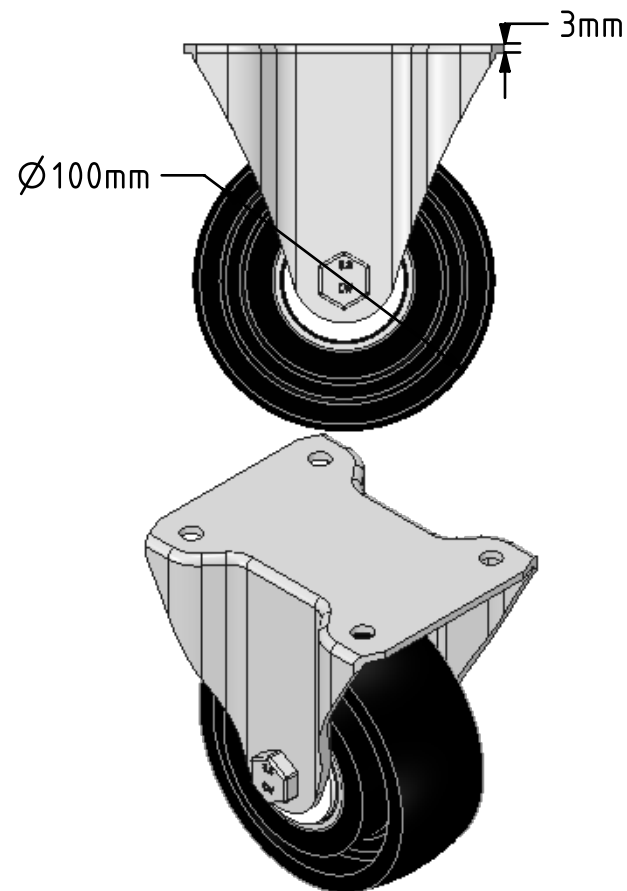
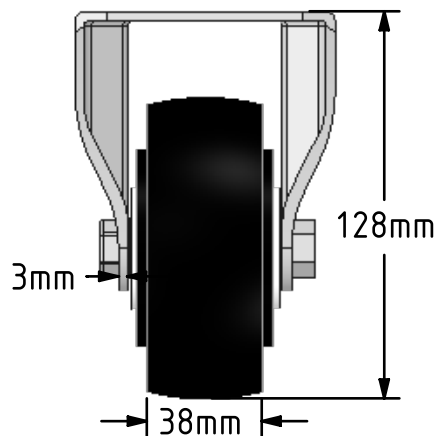
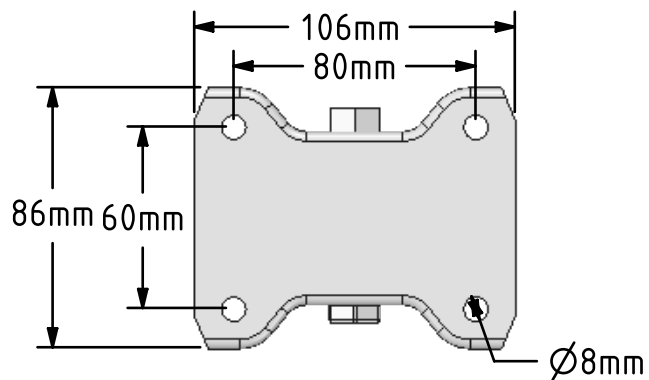
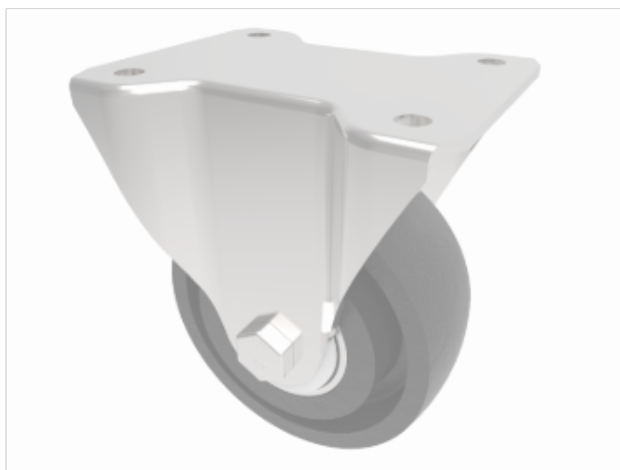


DRAWING DISCLAIMER
 COPYRIGHT OF THIS DRAWING IS RESERVED BY BIL GROUP LTD. IT IS ISSUED ON CONDITION THAT IT IS NOT REPRODUCED, COPIED, OR DISCLOSED TO A THIRD PARTY EITHER WHOLLY OR IN PART WITHOUT THE CONSENT IN WRITING OF BIL GROUP LTD.



Description:
 BZHF100CIBJ

Pressed steel fixed castor with a top plate fixing fitted with a black cast iron wheel with ball bearings. Wheel diameter 100mm, tread width 38mm, overall height 128mm, top plate 106mm x 86mm, hole centres 80mm x 60mm. Load capacity 270kg. (not high temp)



	NAME	DATE
DRAWN	Matt	02/02/18
APPROVED BY	Kevin	02/02/18
SCALE	2.5	02/02/18
WEIGHT	2.073kg	02/02/18

UNLESS OTHERWISE SPECIFIED DIMENSIONS ARE IN MILLIMETRES
 Unspecified Tolerances
 Machining ± 0.25mm
 Fabrication ± 1mm

 BIL Group Ltd, Porte Marsh Road, Calne Wiltshire, SN11 9BW, United Kingdom
 Tel +44 (0)1249 822 222 Fax: +44 (0)1249 822 300
 www.bilgroup.co.uk

TITLE
BZHF100CIBJ

SIZE	DWG NO.	REV
A4	BILCW03BZHF100CIBJ__01	1
FILE NAME	BILCW03BZHF100CIBJ__01.PDF SHEET 1 OF 1	