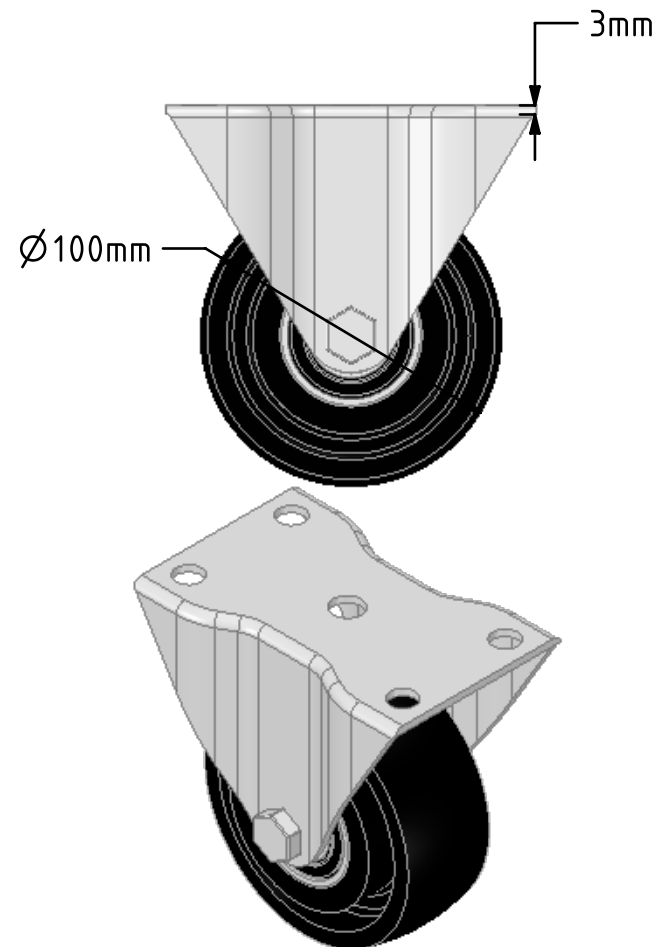
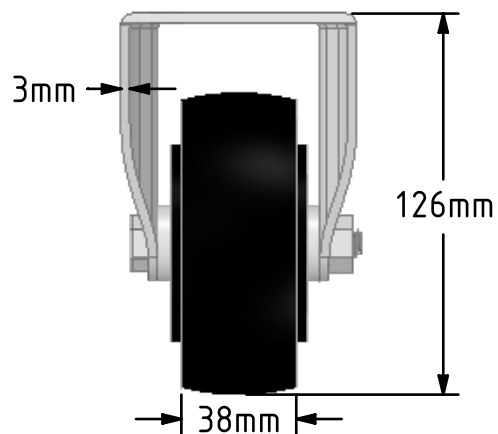
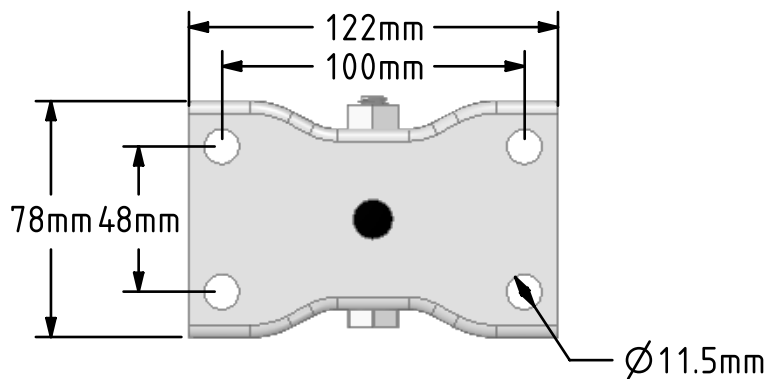
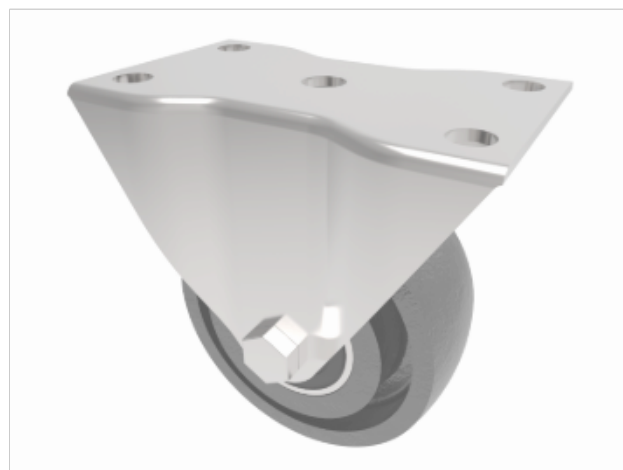


DRAWING DISCLAIMER
 COPYRIGHT OF THIS DRAWING IS RESERVED BY BIL GROUP LTD. IT IS ISSUED ON CONDITION THAT IT IS NOT REPRODUCED, COPIED, OR DISCLOSED TO A THIRD PARTY EITHER WHOLLY OR IN PART WITHOUT THE CONSENT IN WRITING OF BIL GROUP LTD.



Description:
 BZHF100CIBJLP

Pressed steel fixed castor with a top plate fixing fitted with a black cast iron wheel with ball bearings. Wheel diameter 100mm, tread width 38mm, overall height 127mm, top plate 122mm x 78mm, hole centres 100mm x 48mm. Load capacity 250kg.



	NAME	DATE
DRAWN	Matt	20/09/18
APPROVED BY	Chris	20/09/18
SCALE	2:5	20/09/18
WEIGHT	2.071kg	20/09/18

 BIL Group Ltd, Porte Marsh Road, Calne Wiltshire, SN11 9BW, United Kingdom
 Tel +44 (0)1249 822 222 Fax: +44 (0)1249 822 300
 www.bilgroup.co.uk

TITLE		REV
BZHF100CIBJLP		1
SIZE	DWG NO.	FILE NAME
A4	BILCW03BZHF100CIBJLP_01	BILCW03BZHF100CIBJLP_01.PDF
		SHEET 1 OF 1

UNLESS OTHERWISE SPECIFIED DIMENSIONS ARE IN MILLIMETRES
 Unspecified Tolerances
 Machining ± 0.25mm
 Fabrication ± 1mm