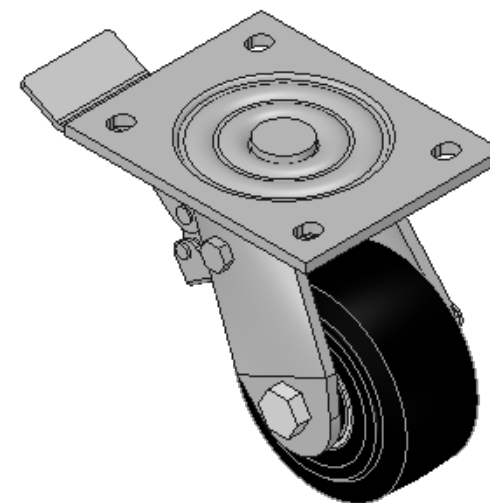
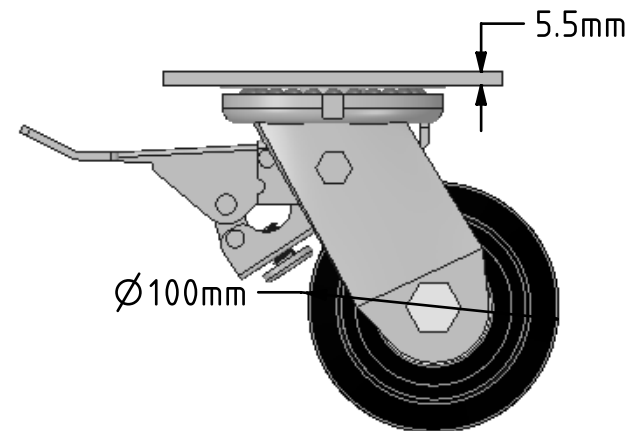
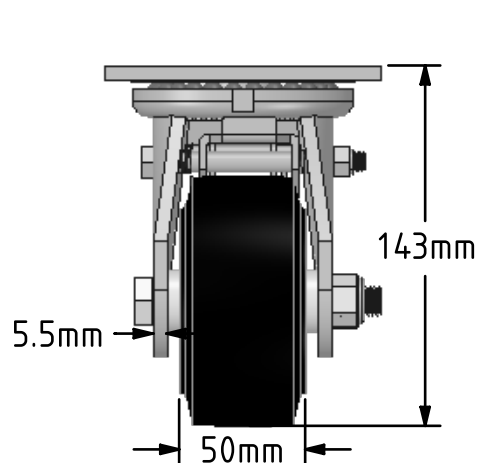
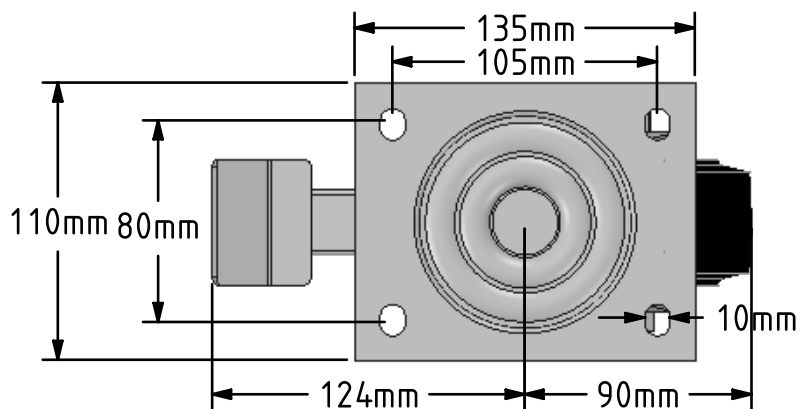


DRAWING DISCLAIMER  
 COPYRIGHT OF THIS DRAWING IS RESERVED BY BIL GROUP LTD. IT IS ISSUED ON CONDITION THAT IT IS NOT REPRODUCED, COPIED, OR DISCLOSED TO A THIRD PARTY EITHER WHOLLY OR IN PART WITHOUT THE CONSENT IN WRITING OF BIL GROUP LTD.



Description:  
 BZJ100CRBJSWB

Fabricated swivel castor with a top plate fixing fitted with a black elastic rubber wheel on a cast iron centre with ball bearings with a total lock brake. Wheel diameter 100mm, tread width 50mm, overall height 143mm, top plate 135mm x 110mm, hole centres 105mm x 80mm. Load capacity 210kg.



	NAME	DATE
DRAWN	Matt	29/03/18
APPROVED BY	Tim W	29/03/18
SCALE	1:3	29/03/18
WEIGHT	3.174kg	29/03/18

UNLESS OTHERWISE SPECIFIED DIMENSIONS ARE IN MILLIMETRES

Unspecified Tolerances  
 Machining ± 0.25mm  
 Fabrication ± 1mm

	BIL Group Ltd, Porte Marsh Road, Calne Wiltshire, SN11 9BW, United Kingdom Tel +44 (0)1249 822 222 Fax: +44 (0)1249 822 300 www.bilgroup.co.uk	
	TITLE	

BZJ100CRBJSWB		
---------------	--	--

SIZE	DWG NO.	REV
A4	BILCW03BZJ100CRBJSWB_01	1

FILE NAME	BILCW03BZJ100CRBJSWB_01.PDF	SHEET 1 OF 1
-----------	-----------------------------	--------------